

## **IMMEDIATE RELEASE**

Sept. 18, 2023

### **For more information:**

Delaney Tholen

785-817-9365

[delaney.tholen@ks.gov](mailto:delaney.tholen@ks.gov)

## **Centennial Bridge inspections require K-92 closures in Kansas and Missouri**

Kansas Department of Transportation biannual bridge inspections are scheduled on the K-92 Centennial Bridge from Wednesday, Sept. 20 to Tuesday, Sept. 26, weather permitting.

Work is scheduled daily from 9 a.m. to 3 p.m., requiring closures on eastbound and westbound K-92, from U.S. 73 (K-7/4<sup>th</sup> Street) in Leavenworth to 500 feet west of the Missouri Route 45 Spur in Platte County, Mo., while inspections are taking place.

Outside of these hours, all lanes will remain open to traffic.

### **Closures are scheduled as follows:**

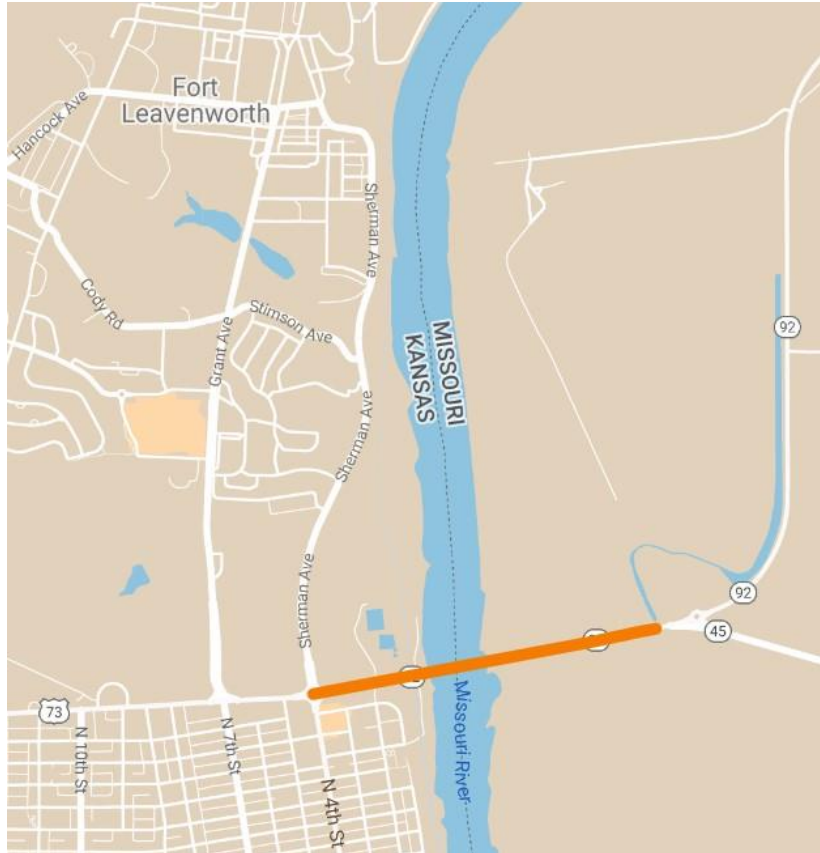
**From Wednesday, Sept. 20 to Monday, Sept. 25, eastbound and westbound K-92 traffic will be reduced to one lane with a flagging operation from 9 a.m. to 3 p.m., daily.**

**On Tuesday, Sept. 26, eastbound and westbound K-92 will be fully closed to traffic from 9 a.m. to 3 p.m.**

Delays are expected and motorists are asked to plan alternate routes and allow for extra travel time.

KDOT urges all motorists to be alert and obey the warning signs when approaching and driving through a highway work zone. To stay aware of all road construction projects across Kansas go to [www.kandrive.org](http://www.kandrive.org) or call 5-1-1. Drive safely and always wear your seat belt.

*Map below shows closure location marked in orange.*



###

This information can be made available in alternative accessible formats upon request. For information about obtaining an alternative format, contact the KDOT Division of Communications, 700 SW Harrison St., 2<sup>nd</sup> Fl. West, Topeka, KS 66603-3745 or phone 785-296-3585 (Voice) / 7-1-1 (Hearing Impaired).

**Click below to connect to KDOT's Social Networks:**

