

IMMEDIATE RELEASE

Sept. 29, 2023

For more information:

Delaney Tholen

785-817-9365

delaney.tholen@ks.gov

**KDOT pavement work resumes tonight on
U.S. 56 (Shawnee Mission Parkway) in Johnson County**

A Kansas Department of Transportation pavement improvement project on U.S. 56 (Shawnee Mission Parkway) is scheduled to resume tonight, Friday, Sept. 29, in Johnson County, weather permitting.

Work on the project started in July 2022 and was paused for local utilities maintenance.

The pavement improvement project includes eastbound and westbound U.S. 56 (Shawnee Mission Parkway) and ramps at US. 56 (Shawnee Mission Parkway)/Metcalf Avenue.

Project work is permitted Monday through Friday, from 7 p.m. to 6 a.m., with single lane closures and intermittent ramp closures while work is taking place.

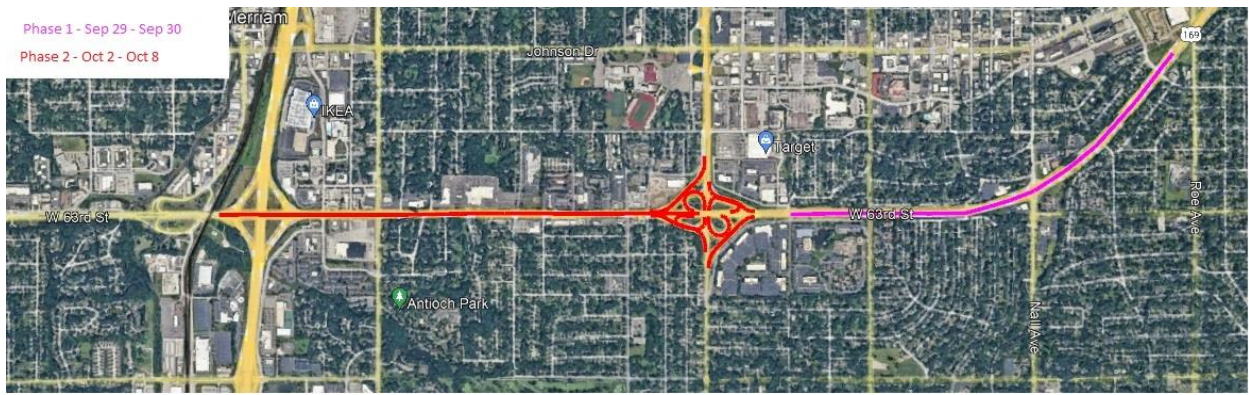
Traffic will be controlled using barricades, signs, cones and arrow boards.

Message boards have been placed in the area to alert motorists of upcoming work.

Superior Bowen, of Kansas City, Mo., is the contractor for the \$1.8 million project, which is expected to be completed in mid-October.

KDOT urges all motorists to be alert and obey the warning signs when approaching and driving through a highway work zone. To stay aware of all road construction projects across Kansas go to www.kandrive.gov or call 5-1-1. Drive safely and always wear your seat belt.

Map below shows project location marked in red and pink.



###

This information can be made available in alternative accessible formats upon request. For information about obtaining an alternative format, contact the KDOT Division of Communications, 700 SW Harrison St., 2nd Fl. West, Topeka, KS 66603-3745 or phone 785-296-3585 (Voice) / 7-1-1 (Hearing Impaired).

Click below to connect to KDOT's Social Networks:

