

# TRANSLINES EXPRESS

Nov. 2, 2022

## Continued KDOT staffing shortages could impact highway snow, ice removal efforts

KDOT is committed to keeping the highways cleared when inclement weather impacts the state, but staffing shortages continue to affect the agency with not enough snowplow operators in many areas. These ongoing shortages could affect KDOT's ability to clear snow and ice from highways in a timely manner.

"We want motorists to know ahead of time - it's not a matter of if the highways will be cleared this winter, but when," said Secretary Julie Lorenz. "KDOT crews will be proactive by shifting crews and pretreating surfaces whenever possible but having fewer employees could cause delays in removing snow and ice from all the affected roadways."

The agency is about 24% short of snowplow operators needed to be fully staffed in offices across the state. However, all KDOT field offices have made preparations in September and October to be ready for winter - employees participated in regional meetings with several days of hands-on snowfighter training exercises. Salt, sand and other materials are fully stocked, and pre-maintenance work on snowplows and other equipment is complete.

"Our maintenance crews always do their best to serve the public as they work 12-hour shifts in their efforts to clear the highways," said Secretary Lorenz. "But motorists can help by checking on road conditions and



*KDOT snowplow drivers take immediate action any time inclement weather hits, whether it's a regional or statewide storm. File photo*

weather forecasts in advance and possibly delaying travel plans. It's important to plan ahead, stay informed and travel safe."

Before traveling, check [www.KanDrive.org](http://www.KanDrive.org), KDOT's road condition website (see story on page 6 on KanDrive and 511 updates).

The agency will deploy all employees who have a Commercial Driver's License (CDL) to plow snow and also hire seasonal employees. For people interested in working at KDOT, go to the state's employment website at <http://jobs.ks.gov/>. KDOT will assist selected applicants in obtaining a CDL upon hiring, which includes providing training.

# Bridge replacement underway on K-55



Early work on the K-55 bridge replacement at the Arkansas River between Belle Plaine and Udall, in Sumner County. Photo by AJ Wilson, District Five

By Tim Potter  
District Five

Early work is progressing on an \$8.23 million replacement of a K-55 bridge in Sumner County.

The KDOT project will replace the K-55 bridge over the Arkansas River between Belle Plaine and Udall. The new bridge will replace the one built in 1933 and will be wider, with the addition of 8-foot shoulders.

The new K-55 structure will be similar in design and construction to one built in 2019 over the same river on U.S. 166 at Arkansas City, said Winfield Area Engineer AJ Wilson. The U.S. 166 bridge also replaced a narrower bridge constructed in the 1930s, Wilson noted.

Work on the new bridge started in September. Among the work so far:

- The contractor has begun building

the sand causeway to allow work vehicles access under the bridge in the middle of the river.

- Demolition of the current bridge has begun.
- Trees in the new right of way have been cleared.
- Investigative core holes are underway for drilled shafts that will provide the new foundation. The concrete shafts will extend deep below the river bed.

The contractor will continue to work during cold weather, Wilson said. The new bridge is estimated to open to traffic in October of 2023.

During the construction, the current bridge is closed with traffic following a signed detour. Thomas Husa's road squad and Peter Tobaben's bridge squad designed the project.

A.M. Cohron & Son Inc., of Atlantic, Iowa, is the primary contractor.

## TRANSLINES EXPRESS

Published by the  
Kansas Department of  
Transportation

Office of the Secretary  
Eisenhower State  
Office Building  
700 SW Harrison  
Topeka, KS

**Transportation Secretary**  
Julie Lorenz

**Deputy Secretary**  
Burt Morey

**Administration**  
Allison Sedore

**Aviation**  
Bob Brock

**Communications**  
Steve Hale

**Engineering and Design**  
Calvin Reed

**Field Operations**  
Clay Adams

**Interim Fiscal/Asset  
Management**  
Pam Anderson

**Multimodal Transportation  
and Innovation**  
Cory Davis

**Planning & Development**  
Chris Herrick

**Policy**  
Joel Skelley

**Interim Program & Project  
Management**  
Pete Van Sickle

**Project Delivery**  
Greg Schieber

**Safety**  
Troy Whitworth



# Employee spotlight: Christine Werth, Area Office Manager

**1. What's your job title?**

Hays Area Office Manager/Administrative Specialist

**2. What sort of duties do you have at work?**

Creating Purchase orders, Paying invoices, and processing credit cards. Other duties include:

- a. Doing inventory audits, ordering supplies and distributing supplies
- b. Helping advertise positions and on-boarding of new employees with new hire paperwork and benefits
- c. Checking timesheets and payroll
- d. Tracking Adopt-A-Highway program and working with the organizations
- e. Updating road conditions in a snow and ice event
- f. Overseeing policy and procedures for Fiscal and HR, and working with KDOT employees
- g. Ordering fuel and tracking fuel usage and reporting.
- h. Working with FMLA process

**3. What kind of music do you like?**

Country and 60's-80's and Christian music.

**4. What's the most exciting part of your job?**

Helping a new hire on their first day.

**5. What's something you're proud of?**

My strength and endurance of things I have overcome in my past. And my faith.



**6. What's your favorite food?**

Well, of course, Taco Tuesday.

**7. What's your favorite movie?**

Any comedy and Hallmark movies.

**8. Do you have any hidden talents or hobbies?**

I love gardening and canning of those items.

**9. Do you have any pets?**

I have a miniature dachshund named Micanopy. My last dachshund was named Seminole.

**10. Are you a sports fan? Who are your favorite teams?**

Yes, I like a lot of sports.

Right now, my favorite is my niece's college volleyball team. And my grandkids' sports - they all play a little something different. Major league: Chiefs and Royals.

**11. Are you a morning person or a night owl?**

Oh, a night owl for sure.

**12. Are you a coffee, tea or pop person?**

Love the smell of coffee but not the taste, so pop.

**13. What's something you enjoy at your job?**

The people I work with and the mural my boss painted in my office.

**14. What's your favorite season?**

Spring because that means it is almost garden time.

## GETTING TO KNOW

### OUR KDOT CO-WORKERS

Featuring an employee each month from different offices throughout KDOT.

**15. What three items would you take with you to a deserted island?**

Family, friends and my dog.

# Terstriep named District Two Engineer

By Ashley Perez  
District Two

Brent Terstriep has been selected as Kansas Department of Transportation's District Two Engineer in Salina. Terstriep transferred to Salina from his position as the District Five Engineer in Hutchinson. He succeeds Randy West, who retired last month.

District Two is responsible for construction and maintenance activities for 16 counties in north central Kansas.

Terstriep pursued his civil engineering degree at the University of Kansas. After graduation, he began with KDOT in 1999 as an Engineering Associate I in Wichita. Through a series of promotions, Terstriep then became the District Five Engineer in Hutchinson in March 2017.

"When I started here, I didn't expect much out of KDOT and I started with very little in the construction office," Terstriep said. "But KDOT has turned out to be a great workplace and I enjoy the people I get to work with every day, including KDOT employees and the people in our communities."

He is devoted to safety at KDOT and looks forward to helping communities with their transportation needs and especially those as they relate to the state highway system through their respective communities.

"Everyone has to go home as good or better than when they started their day," Terstriep said. "That's what makes transportation safety so important."



*Brent Terstriep*

# Squires selected as District Five Engineer

By Tracy Statton  
District Five

Nick Squires has been selected as the Kansas Department of Transportation District Five Engineer.

Squires graduated from Oklahoma State University with a degree in Mechanical Engineering. He started his career with KDOT as a college intern before being hired in 2003 in the construction office in Pratt. In 2004, Squires was promoted to Construction Engineer. From there he went on to serve as the District Five Construction and Materials Engineer in 2018.



*Nick Squires*

District Five is responsible for construction and maintenance activities in 18 counties, including snow and ice removal of the 4,949 miles of state highways in the area.

"This role has an entirely different set of challenges than what I have previously been accustomed to and it felt like the right time to step in and tackle them. It will be different, but the good thing is we have a lot of great people in District Five who are fantastic at their job. I hope I can continue to help them do what they do best," Squires said.

Squires has been married to his wife Shannon for 19 years and they have two daughters, Danielle and Erin. He enjoys spending time with his family, working on old cars and woodworking.

# Messina named Chief of Multimodal Transportation

Matt Messina has been selected as KDOT's Multimodal Transportation Bureau Chief. It's a new bureau within the Division of Multimodal Transportation and Innovation.

He started at KDOT in 2016 in the Bureau of Transportation Planning as the Bicycle/Pedestrian Coordinator. Messina was promoted to Transportation Planning Manager in 2019 where he served until his recent promotion.

The bureau will incorporate four main modes of transportation – Freight/Rail, Public Transportation, Bicycle/Pedestrian and Electrification, with Electrification being fairly new to the agency. Each mode then has a Modal Manager who is responsible for implementing state and federal programming.



*Matt Messina*

The Bipartisan Infrastructure Law (BIL) is providing new and increased funding abilities in the various modes of transportation. It also is putting an emphasis on vulnerable road users and electrification.

“This gives the agency opportunities to elevate multimodal transportation,” Messina said. “The goal is to continue the growth and development of modes along the state system and also help communities expand their multimodal networks along the local system.”

According to Messina, he is excited to be in this position to help establish the new bureau. “I look forward to working with my team and other bureaus as these modes overlap and have an impact on areas throughout KDOT,” he said.

Messina and his wife, Ariane, have two boys and live in Topeka. He travels a lot by bicycle, in fact, he bikes to work most days. Messina also enjoys road trips, camping and cooking for family and friends.



## Out with the old, in with the new

*The new building at the KDOT Scott City Subarea was completed in October, as seen below. The bigger bays will accommodate the dump trucks more efficiently. It replaces the former structure that was built in 1968 (left). Photos by Yazmin Moreno, District Six*





# KanDrive App now available on cell phones

KDOT's KanDrive website is now also available to download as an App on Android and iOS (iPhone Operating System) cell phones.

The new App includes all account features on the KanDrive website but also includes a hands-free/eye-free feature that announces upcoming traffic events while traveling. Just tap the Tell Me sound icon in the top right corner to get announcements of upcoming events (feature requires location sharing).

"It's important for motorists to have quick, accurate and up-to-date information on highway conditions in Kansas," said Kevin Hennes, KDOT Administrator for KanDrive. "Having the new KanDrive App with your choices set up in advance is a convenient option to help



## KanDrive

you travel safely and stay informed."

Like the website, the KanDrive App also offers real time, high-quality streaming of camera views across the state. The truckers' mode for commercial vehicle operators is still an option and now announces rest stop parking availability.

The Kansas 511 phone system also has been updated and simplified for people who prefer to receive real-time highway condition information by calling 511. The voice quality and speech recognition features have been improved, and motorists can ask for reports on a specific route, in a city or between two cities. For more information, go to [www.KanDrive.org](http://www.KanDrive.org).

## First responders tour District Three complex

By Lisa Mussman  
District Three

KDOT partnerships with law enforcement and emergency services are important in the event of a disaster, whether it happens in a work zone or work place.

District Three recently hosted personnel from the Norton County Sheriff's Office, Norton Police Department and Norton County Emergency Medical Services for a tour of the district complex to help familiarize them with the facilities. According to District Safety Specialist Gavlin Henderson, these walkabouts are common practice at schools and he wanted to apply the same practice at KDOT.

Nearly everyone on the tour remarked that they had no idea there was so much to the facility and were appreciative of the opportunity.



*District Three hosted Norton County first responders from law enforcement and emergency medical services for a tour of the complex on Oct. 21. Photo by Gavlin Henderson, District Three*

"All three groups said they feel more mentally prepared to respond to an emergency that could occur on our property," Henderson said. "I am grateful to them for their willingness to learn more about our facility and for their dedication in keeping us safe."



# Work underway, U.S. 166 expansion to finish in 2024

By Priscilla Petersen  
District Four

In January KDOT began expanding a six-mile section of U.S. 166 in Cherokee County. A four-lane expressway is under construction between U.S. 400 and K-26, tapering to two lanes south of K-26 to the Kansas-Missouri state line. In addition, interchanges are being built at U.S. 400 and K-26.

The U.S. 400 bypass from U.S. 69A southeast to U.S. 166 is closed to traffic for the foreseeable future, according to project inspector Brian Harr of Lochner. The expanded U.S. 166, which is being built on an alignment south of the existing route, will close for several months in the spring of 2023 in order to complete the tie-ins. During the closure traffic will follow the signed state detour on U.S. 69A, K-66 and K-26.

Both interchanges are scheduled to be finished during the final project phases. Late in the project the existing two-lane U.S. 166 will also be resurfaced, after which it will become a county road. The entire U.S. 166 expansion, a previously delayed T-WORKS project, should be open to unrestricted traffic in May 2024.

Emery Sapp & Sons of Kansas City, Missouri, is the primary contractor. Steve Rockers' road squad and Karen Peterson's bridge squad designed the project.



*Work on the U.S. 166 expansion in Cherokee County includes grading and bridge work on the new alignment south of the existing highway. Top photo by Rowdy Glaser, District Four; bottom photo by Multimedia Services*



# Citizen praises KDOT employee's efforts

Katie Wille, Senior Administrative Assistant in Chanute, told Public Affairs Manager Priscilla Petersen about a phone call she received in mid-October.

“An elderly lady, 89 years old, called to not complain but to praise one of our workers. And praise is an understatement,” Wille said. “She spent the entire 15 minutes saying over and over just how amazing Andrea was.”

The praise for Andrea Barnes, KDOT Highway Maintenance Supervisor in Louisburg, was a nice change of pace, Wille said.

The lady's car had broken down along U.S. 169 in Miami County and the battery was dead. The lady recounted the story to Wille:

“As highway patrol and sheriffs drove by, not a single person stopped for me. This lady (Andrea) was on her way home from work and stopped behind me to ask if I was alright. She made sure we were safe and our



*Andrea Barnes*

tires were turned to the ditch in case of an accident. Safety was definitely number one on her list.

“She waited with me until my son could get off work, which was 5:30 p.m., I think. He had to go get a towing dolly, so she waited with me some more. She was so sweet and so polite - talked about life and grown children.

“She couldn't have been more amazing. I don't even have words to describe how wonderful this woman is. It was about 7:30 p.m. until we were all able to head home. Just tell her how much I appreciated her and she deserves a raise.”

## Boom mowers

*Leonard Fishburn, Equipment Operator Senior on the Salina District Specials Crew, operates the Alamo Mantis boom mower around guardrails on I-70 in Geary County. The mower can mow areas a traditional mower may not safely be able to such as steep slopes or around guardrails. KDOT currently has six Alamo Mantis mowers in Districts One, Two, Four and Six, in addition to other models, for a total of 14 boom mowers. Photo by Ashley Perez, District Two*





# Give internal body clock time to adjust

By Troy Whitworth  
Director of Safety

This Saturday, Nov. 6, at 2 a.m., daylight savings time (DST) will end. We will “fall back,” and set the clocks back one hour. There is some research that links health concerns and general sleep deprivation when DST begins in the spring. In general, our body’s [Circadian Rhythm](#) (internal clock) are better aligned with natural cycles of light and darkness when DST ends.

Your circadian rhythm can get all out of whack during time changes. You probably have noticed “jet lag” when you fly to a location with a different time zone. For me, flying to the east coast is much worse than flying to the west coast - getting up earlier is harder on me than sleeping in a little bit later. Thankfully, I can adjust to the new time change after a few days.

Night work can get your circadian rhythm out of sync. Plow operators experience this when they go in for their nighttime snow and ice shifts. It is hard to stay up all night, then try to sleep during the day when you aren’t used to it. I am not sure you ever really get used to it. When I was younger, working a night shift wasn’t that hard for me to do. Although, I’m pretty sure if I had to work a night shift now it would not be as easy. I do remember at times, struggling to stay awake from 3 a.m. to when the sun started coming up. Once the sun was up, the sleepiness would usually subside.

The thing about working a night shift is that it can

feel like you are never fully rested. Our bodies are meant to be awake during the day and asleep through the nighttime hours. So, shift work can be really challenging. For plow operators, it is also important to remember to get that rest when being sent home mid-day for their upcoming night shift. This rest time can help you better prepare yourself for the challenging night ahead.

If a person’s circadian rhythm is out of whack for long stretches of time, it can create health issues. In addition to heart disease, things like diabetes and obesity can also become a problem. Fortunately, plow operators are not on night shifts for extended periods of time.

The shift change fatigue still can make you much more sluggish and prone to mind fog. The other issue is that the body’s internal clock just can’t synchronize when shifts are fluctuating between day and night shifts.

When it’s time to move the clock, try to prepare in advance. Before the transition (this Friday), set your alarm clock about 15 minutes later, if possible, for the next

two days, then Sunday morning won’t be as big of an adjustment. Also, plan on being a little jet lagged for a few days.

And the next time you have to work a night shift, remember to get as much sleep as possible beforehand in a quiet, dark room. Exercise for a few minutes after you get up, eat a healthy meal and take a healthy snack with you. Try to limit caffeine to just after you wake up, but stay hydrated through your shift with water or tea. And take a break when necessary. For your family and mine.



# KDOT increases efforts to recruit new talent

By Tracy Statton  
District Five

In-person career fairs have returned for KDOT Human Resources staff members, and they are busy working to recruit new talent.

Staff attend career fairs in local communities, high schools, technical schools and universities across Kansas and other states. The fairs allow staff to meet potential hires and answer questions.

“We provide information and directions for the application process to cut down on wait times for hiring. This gives the applicant a point of contact if they have questions once they leave the career fair,” said Debbie Lang, Recruitment Manager.

Lang said they’re seeing increased interest in working for KDOT. “We are continually looking for ways to



*Human Resources Recruiter DeeDee Becker is joined by KDOT employees Corey Dinkel, Lucas Smith and Steven Cross at a recruiting event.*

improve our outreach and recruitment process and have seen an uptick in applicants this year.”

It’s satisfying to help someone get a job, she said. “It is fun to meet new people. Many job seekers are not aware of the wide variety of opportunities KDOT offers, and it is enjoyable talking to them and seeing their interest and excitement when they hear about joining our KDOT family,” Lang said. “It gives us a chance to get to know the candidate and help them make good employment decisions.”

In addition to attending career fairs, HR staff make career presentations at high schools and junior colleges. They also partner with the Kansas Department of Corrections, and they are building the internship program to provide students and entry level employees the opportunity to learn more about their field of interest.



## STEP BACK IN TIME ...

In this historical photo, paving work took place in 1938 on U.S. 160 in Barber County.



# IKE and the 35th Infantry Division Memorial Highway

By Delaney Tholen  
District One

Whether by chance or with intent when christened in 1963, the memorial designation for one of Kansas' most-traveled roadways could hardly be more appropriate. For hundreds of miles, through nearly a dozen counties, I-35 in Kansas is well suited for the title of 35th Infantry Division Memorial Highway.

Here are some bits of information about the 35th Division in honor of Veterans Day (and to share with fellow travelers on I-35):

- The "35th" has long been known as the "Santa Fe" division, paying heed to the 19th Century Santa Fe Trail. The 35th insignia was designed to model a cross inside a wagon wheel, representative of westward settlement and the states from which its members joined.
- Mustered in 1917, the 35th is currently a National Guard headquarters unit at Fort Leavenworth with approximately 300 members.
- The 35th saw heavy combat in WWI, including the Meuse–Argonne offensive, one of the largest battles in U.S. military history. Though in combat for less than two months, the 35th suffered massive casualties, with more than 1,400 troops killed and nearly 6,000 wounded.
- Long before President Dwight Eisenhower became the namesake for KDOT's Eisenhower Legacy Transportation Program (or IKE), he was significant to the 35th Infantry Division of the U.S. Army National Guard as its military commander and later, as president, to its veterans' association.
- Numerous notable figures have served in the 35th over the years, including sports greats, business leaders and President Harry S. Truman. "Cpt. Truman" served as Battery Commander of the 129th Field



*Artifacts on display at the 35th Infantry Division Museum. Photo by Delaney Tholen, District One*

Artillery Regiment in WWI and his first cousin, Maj. Gen. Ralph Truman, was Commander of the 35th Division from 1940 to 1941.

- Following the bombing of Pearl Harbor, the 35th joined the Western Defense Command, where troops were assigned to guard the Golden Gate Bridge and traveled there via Santa Fe Railroad.
- In May 1944, the 35th continued preparations in England (where Col. Eisenhower met them for inspections) and landed on Omaha Beach in July 1944, about one month after D-Day.
- The 35th fought in several WWII key battles, including the Battle of the Bulge, faced both the 1st and 2nd SS Panzer Divisions of the German Army and returned home in September 1945.

- Kansas Congressman Ed Rees, of Emporia, sponsored legislation (championed by the 35th veterans group) to change Armistice Day to Veterans Day, honoring all veterans, rather than just those from WWI. The House bill was approved and signed by President Eisenhower in 1954.
- In contemporary service, the 35th led relief efforts during Hurricanes Katrina and Rita (2005), and deployed overseas to Bosnia and Herzegovina (2003) and Kosovo (2007) for peacekeeping missions.
- Troops from the 35th are currently deployed to Southwest Asia for one year in support of Operation Spartan Shield, following a 2018 deployment to Kuwait as part of the same Operation. The 35th will return home to Ft. Leavenworth in Spring 2023.

Located at Forbes Field Air National Guard Base in Topeka, the 35th Infantry Division Museum is open to the public daily, Monday through Saturday. A virtual tour can be accessed online [HERE](#).

# Trivia!

## Actors who served in the military – part five

1. He had roles from “Butch Cassidy and the Sundance Kid” to voicing the character of Doc Hudson in the animated film “Cars.”
2. He served as a judge for 20 years, then became the judge on “The People’s Court.”
3. He is the only person to be awarded stars in all five categories on the Hollywood Walk of Fame – film, television, music, radio and live performance.

4. He was the original insult comic and was an unofficial member of the Rat Pack. He was also on the “Tonight Show Starring Johnny Carson” more than 100 times.
5. He won the Academy Award for Best Actor in the film “Cat Ballou” and was in “The Dirty Dozen.”
6. He won a Tony Award, a Primetime Emmy Award and two Academy Awards – one of these was for Supporting Actor in “All the President’s Men.”



## K-383 modernization

*Construction crews started paving operations in mid-October on Phase I of the K-383 modernization in Phillips County. The \$11.8 million project will widen 6 miles of the highway and add 6-foot paved shoulders, as well as decrease side slopes and flatten several sections of hills. The road is expected to be reopened by the end of the year, weather permitting. Photo by Dan Moore, District Three*

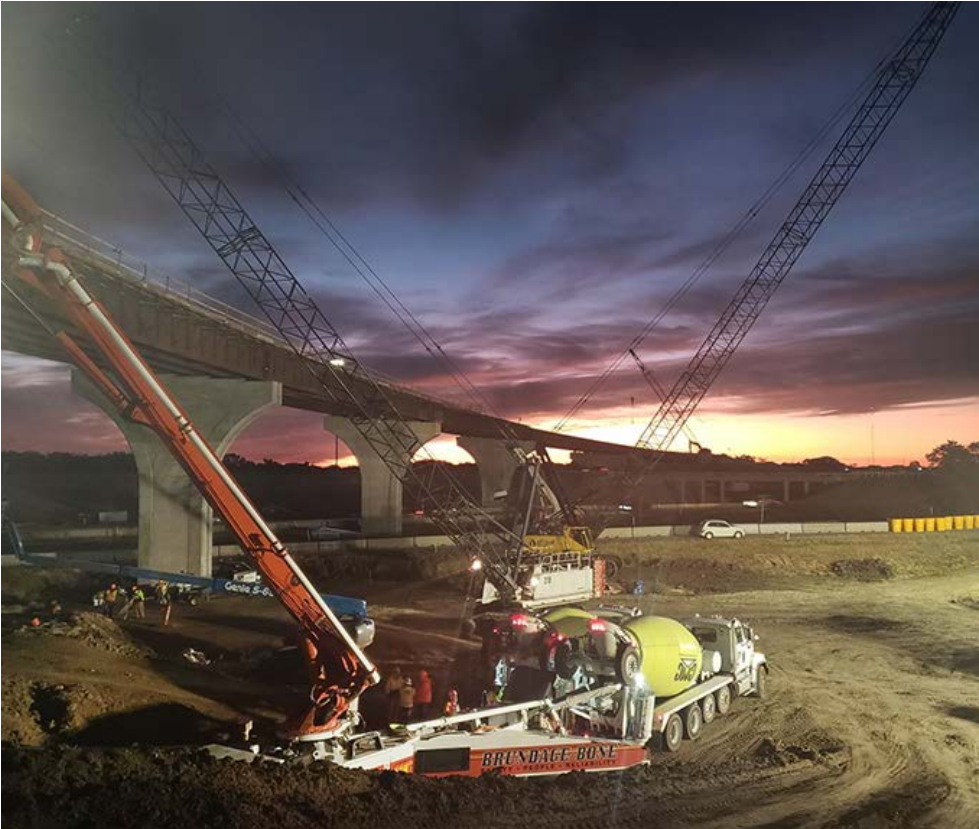
## Trivia answers

1. Paul Newman. He wanted to become an aviator but was color blind. He did qualify as a rear seat radioman and took part in the Battle of Okinawa in 1945.
2. Joseph Wapner. He served with the Army’s 132nd Infantry Regiment in the Pacific Theater including the Guadalcanal Campaign, Bougainville Campaign and the retaking of the Philippine Islands.
3. Gene Autry. He served in the Army Air Forces. At first, he did his radio show for the soldiers. But he was a pilot before serving and got new orders to become a Flight Officer. He served with the 91 Ferrying Squadron for three years.

4. Don Rickles. He joined the U.S. Navy in 1942 and first wanted to entertain the troops. But he then served on the USS Cyrene in the Pacific Theater.
5. Lee Marvin. He joined the U.S. Marine Corps Reserve and was wounded during the Battle of Saipan. He was one of only six survivors from his unit of 247.
6. Jason Robards. He joined the U.S. Navy in 1940 and served in 13 major naval engagements. His ship was at sea with the USS Enterprise on Dec. 7, 1941, and returned the next day to total devastation at Pearl Harbor.



## Milestone reached on Gold Project at Wichita's North Junction



A significant milestone on the Gold Project at Wichita's North Junction - the first concrete bridge deck pour was made on Oct. 27 on the two-lane flyover ramp for northbound I-135 to southbound I-235. The new ramp will replace a loop ramp that has been a major bottleneck in Wichita. The three-year accelerated phase of the Gold Project began in 2021 and will finish in the fall of 2023. The second part of the Gold Project will be let this month. It will include a two-lane direct connection from northbound I-235 to eastbound K-96 plus new ramps from K-96 onto I-135 south of the North Junction. See more info on the North Junction Project [HERE](#) and [HERE](#). Jeff Sims' road squad and Peter Tobaben's bridge squad designed the projects. Photo by Joe Ausilio, District Five

## KTA briefs

- In the new [On the Road](#) episode, CEO Steve Hewitt talks with Diana Ensign, KTA's Human Resources Director about the workforce changes and plan. KTA Engineer Rich Olson also gives us a sneak preview of the new Topeka administration building (photo at right) and how that will serve cashless tolling in 2024.
- KTA has awarded a contract for pavement surfacing of I-35/KTA from mile markers 50.8 to 71.3, including interchange and service area resurfacing. To learn more, read the full news release [HERE](#).
- A new mobile app to manage K-TAG accounts will launch by the end of the year. This new mobile app



will replace the old one, which will no longer be available. Customers will be able to view their trips, order new K-TAGs and update their information easily through their phone. Updates on the app will be made on KTA Facebook and Twitter.

# KDOT hosts event at new Lawrence office

By Delaney Tholen  
District One

KDOT staff and transportation industry partners at the KU Innovation Park (formerly known as the Bioscience & Technology Business Center) hosted an event on Oct. 10 for people to learn about the agency as well as employment opportunities.

KDOT PMC Coordinating Engineer Kris Norton described the event as “beginning a coordination effort to better connect our resources and shared goals... to help us strengthen our relationships with the KU campus and our local transportation industry partners.”

Amy Rockers, Road Support Engineer, said, “After the past couple years of limited in-person events and changes to our staff, this was a great way to reform relationships between KDOT and KU.”

KDOT has had offices in Lawrence since 2016. The new and consolidated KDOT office suite has employees from Road Design, Bridge Design, Traffic Engineering,



*KDOT employees Amy Rockers and Lucas Smith (center) chat with University of Kansas engineering students at the Oct. 10 event. Photo by Delaney Tholen, District One.*

Program and Project Management, Transportation Safety and Local Projects. Additionally, the suite has conference rooms and floating desk spaces for KDOT staff. Larger conference rooms are also available for KDOT use.



## Burning up

*KDOT crews had to shut down a section of K-27 in Hamilton County the morning of Oct. 23 as hay on a flatbed trailer caught on fire. The roadway was shut down for about two hours. Picture courtesy of Hamilton County Sheriff's Department*



# Governor announces more than \$67.65M in funding for three KDOT transportation programs

Throughout October, Governor Laura Kelly and Secretary Julie Lorenz announced funding for the Transportation Alternatives (TA) Program, the City Connecting Link Improvement Program (CCLIP) and the Cost Share Program.

More than \$28.5 million has been awarded for 32 TA Program projects across Kansas for Fiscal Year 2023-24. The grant program provides funding for a variety of projects, including pedestrian and bicycle facilities, infrastructure for non-driver access to public transportation, and overall safety and mobility improvements.

Since 2019, KDOT has awarded \$59 million for 91 TA projects to both urban and rural communities. Click [HERE](#) for the TA Program news release.

“This funding will make it easier for Kansans to get outside and get moving no matter where they live,” Governor Kelly said. “By investing in our infrastructure, we are making our communities safer, stronger, and more attractive for generations to come.”

There were 34 cities selected to receive a total of \$28.65 million in grants through the CCLIP. The program focuses on improvements to the State Highway System located within city boundaries. The funds will be directed to preserve and improve pavement, add turn lanes, and modify intersections along essential roadways in both rural and urban areas throughout the state.

For this CCLIP cycle applying to state fiscal years 2024-2025, KDOT received 54 applications requesting \$38



*Governor Kelly outlines the different projects that were selected for Cost Share Program funding on Oct. 21 in Wichita. Photo by Steve Hale, Headquarters*

million. Click [HERE](#) for the CCLIP news release.

“By making this investment, we’re improving the safety and accessibility of Kansas roadways that are local centers of community life,” Governor Laura Kelly said. “Through these grants, we’re delivering economic opportunities throughout rural and urban Kansas.”

Over \$11 million was awarded to 14 transportation construction projects as part of the fall Cost Share Program. With these grants, more than \$114 million in state funding has been invested in over 130 Kansas communities through the Cost Share Program since it was founded in 2019. Click [HERE](#) for the Cost Share news release.

“KDOT was impressed with how this round of Cost Share projects hit markers for economic development, safety, and community support,” said Secretary Lorenz. “Collaborating with local partners makes this program a win-win for everyone.”

## Thank you for your service

### Retirees

The following employees will retire on Dec. 1.

#### Headquarters

**John Maddox**, Research Analyst V, Multimodal Transportation

#### District Three

**Rick Warren**, Equipment Operator Specialist, Goodland

#### District Five

**Dean Hess**, Engineering Technician Senior, Wichita

**Donald Snyder**, Wichita Metro Engineer, Wichita

#### District Six

**Dennis Grubbs**, Equipment Operator Senior, Garden City

The following employees will retire on Nov. 1.

#### District Four

**Benedikt Middleton**, Engineering Technician Specialist, Iola

*If you know a KDOT retiree who is not receiving Translines - have them email [Kim.stich@ks.gov](mailto:Kim.stich@ks.gov) - thanks*

### Milestones

KDOT employees celebrating state service anniversaries.

#### November

##### 20 years

**David Schuster**, Equipment Mechanic Specialist, Richmond

##### 10 years

**Stacy Swann**, Engineering Technician Specialist, Topeka

#### December

##### 30 years

**Chris Golden**, Engineering Technician Senior, Wichita

**Robert Lauer**, Equipment Operator Senior, Westmoreland

##### 20 years

**Danny Bacon**, Equipment Operator Senior, Hoxie

**Rodney Bencken**, Highway Maintenance Superintendent, Oakley

**Rusty Miller**, Highway Maintenance Supervisor, Paxico

**Daniel Zirkle**, Engineering Technician Specialist, Burlingame

##### 10 years

**Stephen Borjas**, Equipment Operator Senior, Kansas City

**Linda Limon-Rocha**, Senior Administrative Assistant, Topeka

**Jeffrey Sims**, Professional Civil Engineer II, Eudora

**Curtis Werner Jr.**, Equipment Operator, McPherson, Lyons

**Mark Wiedmer**, Equipment Operator Senior, Troy

### In Memory

Condolences to the family and friends of KDOT retiree **Mary Remboldt**, who passed away in Topeka on Sept. 24. She was a Secretary I for the Research Unit in the Bureau of Materials and Research. Remboldt retired in 1994 after nearly 30 years of service.

Condolences to the family and friends of KDOT retiree **Roger Wilcoxon**, of Winfield, who passed away on Oct. 12. He started at KDOT in 1980 and worked as an Engineering Technician Senior. He retired from the El Dorado office after 23 years of service.



# KDOT Employee Council Holiday Ornament Order Form

Year	Quantity	Cost	Total
<b>2022</b>		<b>\$6</b>	
2020		\$3	
2019		\$3	
2015		\$3	
2013		\$3	
Total enclosed			



Please Print -

Name: \_\_\_\_\_

Work address: \_\_\_\_\_

\_\_\_\_\_ (Retirees only - home address)

Best phone: \_\_\_\_\_

## How to Order:

HQ - email/call Jennifer to make arrangements.

Districts/Retirees - Mail form to -  
Jennifer Meyer, ESOB/6th Floor,  
700 SW Harrison, Topeka, KS 66603

Checks payable: KDOT  
Employees' Council

For more details, contact  
Jennifer: (785) 296-3661 or  
Jennifer.Meyer@ks.gov

## A few past ornaments still available

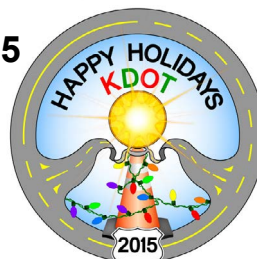
2020



2019



2015



2013

