

Miami County K-68 Expansion

KDOT Project No.
68-061 KA 2373-01

PUBLIC MEETINGS

The Kansas Department of Transportation (KDOT) is holding **two public open houses** for the Miami County K-68 Expansion Project in early May. One meeting will be held in Louisburg; another in Paola. The same information will be presented at each meeting. No formal presentations will be given, so stop by anytime.

Louisburg

Monday, May 6, 2013

5 to 7 p.m.

American Legion

403 S. 9th Street

Louisburg, Kansas 66053

Paola

Tuesday, May 7, 2013

5 to 7 p.m.

Paola Community Center

905 E. Wea Street

Paola, Kansas 66071



ABOUT THE PROJECT

The ***Miami County K-68 Expansion Project*** is funded for \$10 million of construction through T-WORKS, Kansas' 10-year, \$8 billion transportation program. However, the funding is not enough to expand all eight miles of the road from US-169 to US-69, so only T-WORKS funded improvements will be built. During the May 6 and 7 public open houses, the project team will present a \$10 million package of conceptual improvements for your feedback and will encourage you to share your thoughts about the improvements most important to your community and suggestions for where construction should happen first. KDOT is also collecting comments online at www.k68comments.org.

**We look forward to
talking with you!**

For more information, bookmark the project website at www.tinyurl.com/MiamiCountyK68.

You can also contact:

Hugh Bogle, KDOT Area Engineer

hugh@ksdot.org and (785) 448-5446

Note: *The meeting locations are ADA accessible. Persons in need of a sign language interpreter, an assistive listening device, large print or Braille material, or other accommodation to participate in this meeting should notify Priscilla Petersen, KDOT Public Affairs Manager, at priscilla@ksdot.org or (620) 431-1000. You can also contact Kristy Kelly, KDOT Community Affairs Manager, at kristyk@ksdot.org and (620) 431-1000.*

Welcome

Public Officials Briefing

3:30 to 4:30 p.m.

May 6 and 7

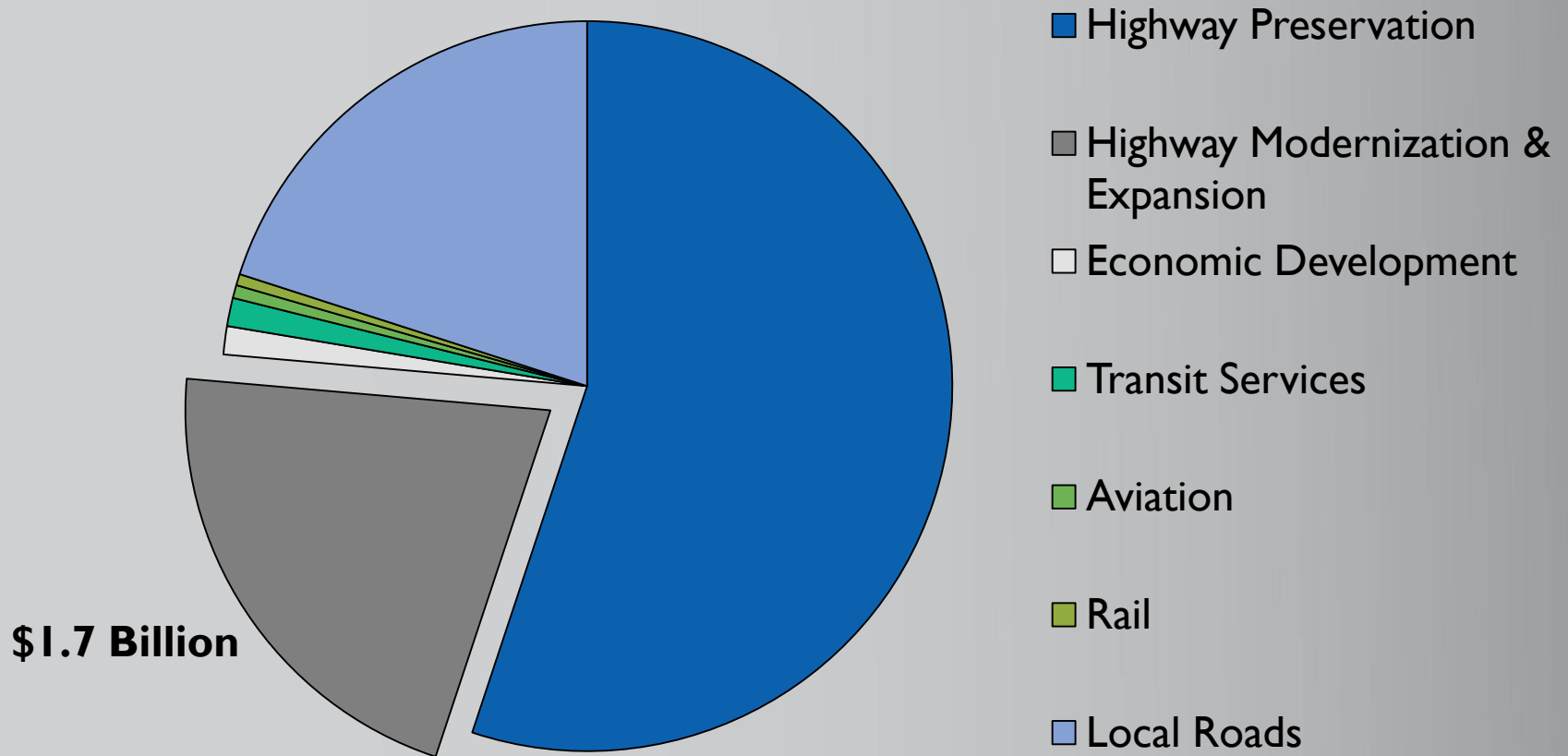
Paola and Louisburg, Kansas

Today's Public Officials Briefing

- ▶ Expansion of K-68
- ▶ Purpose and Need for the Project
- ▶ Timing and Schedule
- ▶ Community Feedback
- ▶ T-WORKS \$10 Million Improvement Package
- ▶ Future Expressway Project
- ▶ Feedback and Next Steps



T-WORKS Statewide Budget: \$8 Billion Promise



T-WORKS Expansion of K-68 to 4 Lanes

Project Profile



Interim improvements on K-68 in Miami County

Project Details - Construction Project

Route: K-68
County: Miami
Project Number: KA-2373-01
Project Type: Expansion
Location: K-68: from US-169, East to US-69 at Louisburg
Scope: Plan Development for a 4-Lane Expressway and construction improvements.
Length: 8 miles
Scheduled Start Date: March 2, 2018
Scheduled End Date: September 20, 2019

[Back to project list](#)

Project Cost

Construction:	\$10,000,000
Design:	\$677,000
Right-of-Way:	\$200,000
Utilities:	\$200,000
Inspection:	\$750,000
Total:	\$11,827,000

[Download to Pdf](#)

More T-WORKS Data

[Click here for progress towards Miami County's \\$8M Promise](#)

[Click here to view Miami County's Investments](#)

Project Information

KDOT Kicks Off K-68 Expansion on Miami County

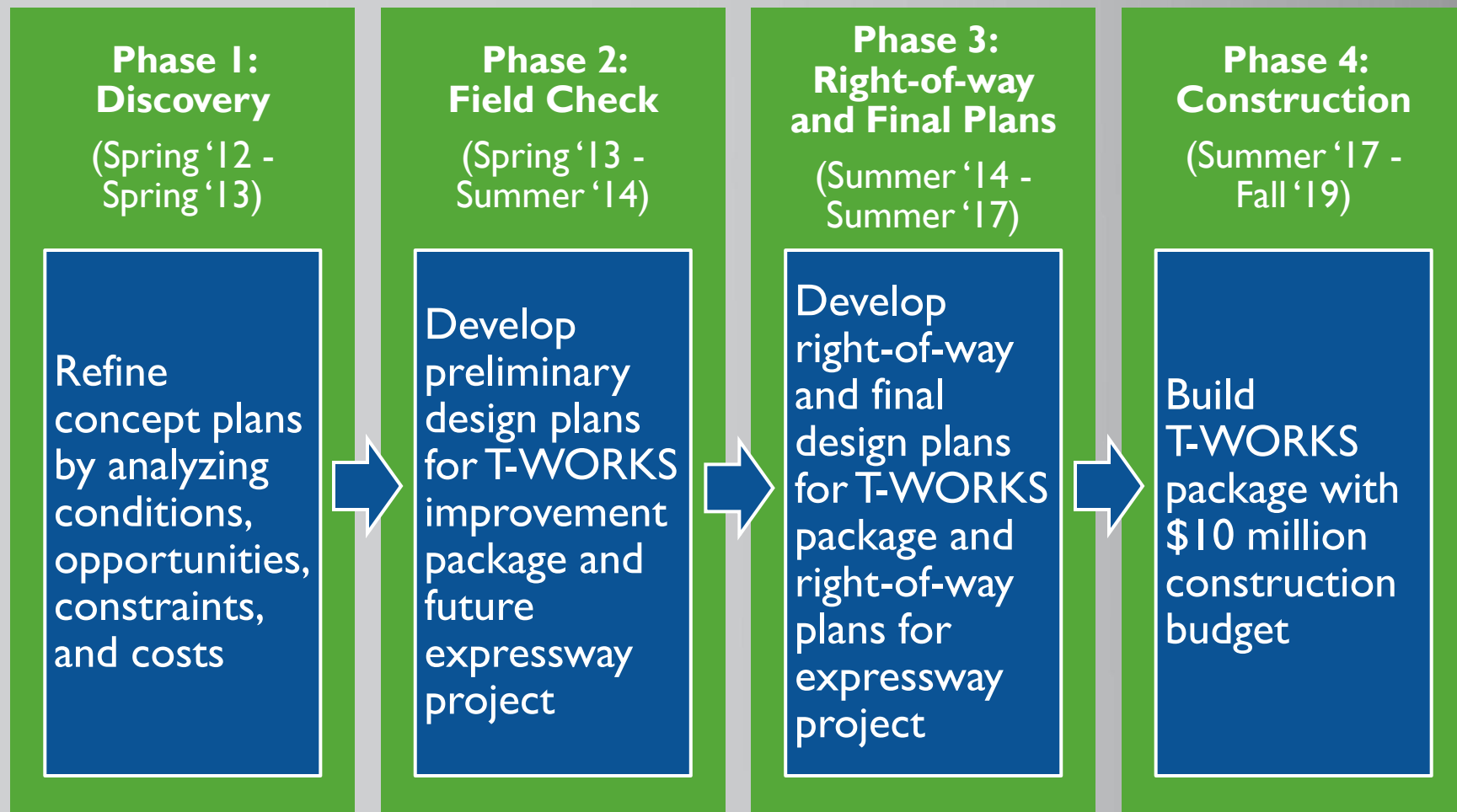
Contact Person
Priscilla Petersen
priscilla@ksdot.org
620-431-1000

Purpose and Need for the Project

- ▶ Cities and counties identified K-68 as major traffic carrier and growth area
- ▶ K-68 is on next ring of expansion from the KC Metro
- ▶ Significant residential, commercial, and industrial growth anticipated



Timing



Summary of Community Feedback Thus Far

► Comments from Kick-off Meeting (Spring 2012)

Potential Improvement Areas	Issues or Concerns
Bridge at K-68 and US-169	<ul style="list-style-type: none">• Safety• Site distances• Turning movements
Westbound K-68 at northbound US-169	<ul style="list-style-type: none">• Hilly
K-68 at US-69	<ul style="list-style-type: none">• Economic development
West of Louisburg Ford	<ul style="list-style-type: none">• Visibility• Accessibility
Cider Mill	<ul style="list-style-type: none">• Safety• Economic development
Somerset Road	<ul style="list-style-type: none">• Safety• Capacity
Cross-over locations	<ul style="list-style-type: none">• Safety

Summary of Community Feedback Thus Far

- ▶ Comments from Focus Groups and Community Meeting (Summer 2012)
 - ▶ **Desire for improved corridor safety**
 - ▶ High accident areas: Cider Mill, Beaver Creek and New Lancaster
 - ▶ **Concerned about impacts:**
 - ▶ Properties and driveway access
 - ▶ Wal-Mart and Gardner Intermodal Facility
 - ▶ Increasing traffic, especially from trucks
 - ▶ **Interested in:**
 - ▶ Turn lanes at intersections
 - ▶ Improvements to the east side of Louisburg
 - ▶ Economic development
 - ▶ Park-and-Ride at US-169
 - ▶ Traffic signals at/near US-169 interchange
 - ▶ Narrower typical section



T-WORKS \$10 Million Improvements : Near-Term

Miami County K-68, US-169 to US-69

TWORKS Project



•Add Westbound Right Turn Lane

These concepts depict potential improvements along K-68 and the local street network from US-169 to US-69. The exact improvements may vary from those shown and will be determined during the design stage. The location of the existing right-of-way as shown is for information only.



•Add Eastbound and Westbound Left Turn Lanes
•Extend Eastbound Right Turn Lane

LEGEND

- K-68 PAVEMENT
- SIDE ROAD / ACCESS ROAD
- ENTRANCES
- EXISTING RIGHT-OF-WAY
- ACCESS CLOSED
- TRAFFIC COUNTS

2018 Volume
2008 Volume

XXX (XXX)

**US-169
Highway to
Block Road**

KDOT Project No. 68-61 KA-2373-01

Kansas
Department of Transportation

TWORKS
Jobs • Safety • Economic Development

May 2013

T-WORKS \$10 Million Improvements : Near-Term

Miami County K-68, US-169 to US-69

TWORKS Project

- Add Eastbound Left Turn Lane
- Add Westbound Right Turn Lane



These concepts depict potential improvements along K-68 and the local street network from US-169 to US-69. The exact improvements may vary from those shown and will be determined during the design stage. The location of the existing right-of-way as shown is for information only.



- Extend Eastbound Right Turn Lane
- Extend Westbound Left Turn Lane

LEGEND

- K-68 PAVEMENT
- EXISTING RIGHT-OF-WAY
- ACCESS CLOSED
- TRAFFIC COUNTS

2018 Volumes
2038 Volumes
XXX (XXX)

Oak Grove Road to Beaver Creek Road

KDOT Project No. 68-61 KA-2373-01

Kansas **TWORKS**
Department of Transportation
May 2015

T-WORKS \$10 Million Improvements : Near-Term

Miami County K-68, US-169 to US-69

TWORKS Project



- Add North and South Access Roads
- Add Eastbound Left Turn Lane at New Lancaster
- Add Westbound Right Turn Lane at New Lancaster
- Add Westbound Right Turn Lane at Realigned Spring Valley

These concepts depict potential improvements along K-68 and the local street network from US-169 to US-69. The exact improvements may vary from those shown and will be determined during the design stage. The location of the existing right-of-way as shown is for information only.

- Construct 4-lane Expressway from Spring Valley to US-69

New Lancaster Road to US-69 Highway

KDOT Project No. 68-61 KA-2373-01
Kansas TWORKS
May 2013

Future Expressway Project: Long-Term

Miami County K-68, US-169 to US-69

Future Expressway Concepts



LEGEND

	EXISTING RIGHT-OF-WAY		SIDE ROAD / ACCESS ROAD
	K-68 FUTURE EXPRESSWAY		ENTRANCES
	K-68 PAVEMENT SHOULDER		CONSTRUCTED WITH T-WORKS PROJECT
	ACCESS CLOSED		

These concepts depict potential improvements along K-68 and the local street network from US-169 to US-69. The exact improvements may vary from those shown and will be determined during the design stage. The location of the existing right-of-way as shown is for information only.



Future Expressway Project: Long-Term

Miami County K-68, US-169 to US-69

Future Expressway Concepts



LEGEND

- | | |
|--|---|
|  EXISTING RIGHT-OF-WAY |  SIDE ROAD / ACCESS ROAD |
|  K-68 FUTURE EXPRESSWAY |  ENTRANCES |
|  K-68 PAVEMENT SHOULDER | |
|  ACCESS CLOSED | |

These concepts depict potential improvements along K-68 and the local street network from US-169 to US-69. The exact improvements may vary from those shown and will be determined during the design stage. The location of the existing right-of-way as shown is for information only.

Oak Grove Road to Beaver Creek Road

KDOT Project No. 68-61 KA-2373-01



May 2013

Future Expressway Project: Long-Term

Miami County K-68, US-169 to US-69

Future Expressway Concepts



LEGEND

- | | | | |
|--|------------------------|--|----------------------------------|
| | EXISTING RIGHT-OF-WAY | | SIDE ROAD / ACCESS ROAD |
| | K-68 FUTURE EXPRESSWAY | | ENTRANCES |
| | K-68 PAVEMENT SHOULDER | | CONSTRUCTED WITH T-WORKS PROJECT |
| | ACCESS CLOSED | | |

These concepts depict potential improvements along K-68 and the local street network from US-169 to US-69. The exact improvements may vary from those shown and will be determined during the design stage. The location of the existing right-of-way as shown is for information only.

New Lancaster Road to US-69 Highway

KDOT Project No. 68-61 KA-2373-01



May 2013

Feedback: Scheduled, In-person Meetings

► Officials Briefings followed by Public Open Houses:

► **Monday, May 6 at 3:30 to 4:30 p.m. and 5 to 7 p.m.**

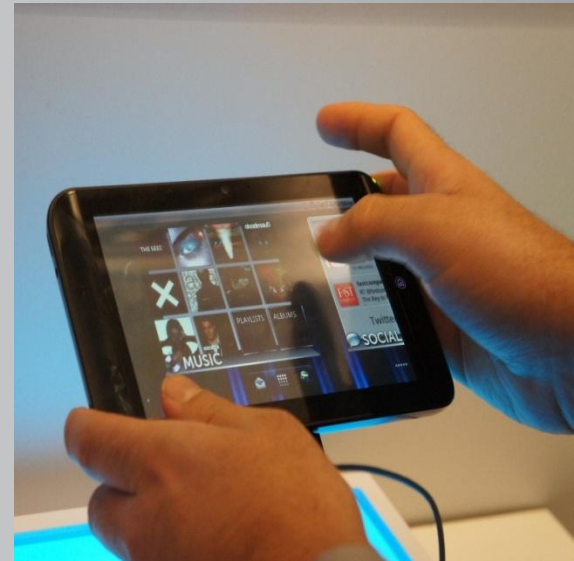
American Legion, 403 S. 9th St., Louisburg, Ks.

► **Tuesday, May 7 at 3:30 to 4:30 p.m. and 5 to 7 p.m.**

Paola Community Center, 905 E. Wea St., Paola, Ks.

Feedback: Online at www.k68comments.org

- ▶ What **kinds of highway improvements** are most important for K-68? Why?
- ▶ **Where** along K-68 should near-term improvements be built first? Why?
- ▶ What **other comments** do you have about the K-68 Expansion project?



Next Steps: Discovery and Field Check Phases

- ▶ Wrap up Discovery Phase with report based on:
 - ▶ Engineering analysis
 - ▶ Community feedback
 - ▶ Briefing for public officials
 - ▶ Public open houses
- ▶ Begin Field Check:
 - ▶ Preliminary design plans for T-WORKS \$10 million improvement package and future expressway project



Stay Informed

- ▶ Bookmark www.ksdot.org/t-works
- ▶ Follow us on Facebook – Kansas Department of Transportation-Southeast Kansas
- ▶ Continue to communicate with:

Hugh Bogle, KDOT Area Engineer
hugh@ksdot.org and (785) 448-5446

Steve Rockers, KDOT Project Manager
srockers@ksdot.org and (785) 296-1004

Priscilla Petersen, KDOT Public Affairs Manager
priscilla@ksdot.org and (620) 431-1000

Miami County K-68 Expansion

Get the Facts
Spring 2013

What's Happening

Overview

The Kansas Department of Transportation (KDOT) is preparing long-term plans to expand eight miles of existing K-68 in Miami County between US-169 on the west and US-69 on the east to a four-lane expressway. The project team shared initial thoughts about K-68 improvements with stakeholders during the spring and summer of 2012. Since then the team's combined stakeholder feedback with engineering and field analyses to develop the package of conceptual improvements on display today.

Share your opinion

KDOT is hosting a **public officials briefing and community open house** in both Louisburg and Paola to hear your ideas for improving the **Miami County K-68 Expansion Project**. Come review the exhibits and share your thoughts with us!

American Legion

403 S. 9th Street
Louisburg, Kansas 66053
Monday, May 6, 2013
Officials Briefing from 3:30 to 4:30 p.m.
Public Meeting from 5 to 7 p.m.

Paola Community Center

905 E. Wea Street
Paola, Kansas 66071
Tuesday, May 7, 2013
Officials Briefing from 3:30 to 4:30 p.m.
Public Meeting from 5 to 7 p.m.



Take a few seconds to give your feedback!

Use your computer (table, laptop or desktop) or phone to visit www.k68comments.org and give your opinion on the following topics:

What improvements are most important for K-68?

Where along K-68 should improvements be built first?

Anticipated Improvements

Improvements, such as changes needed for key intersections, development of frontage and/or reverse frontage roads, and more are scheduled to be constructed between spring 2018 and fall 2019. The project is already funded for \$10 million of construction through T-Works. However, the funding is not enough to expand all eight miles of the road, so only T-Works funded improvements will be built.

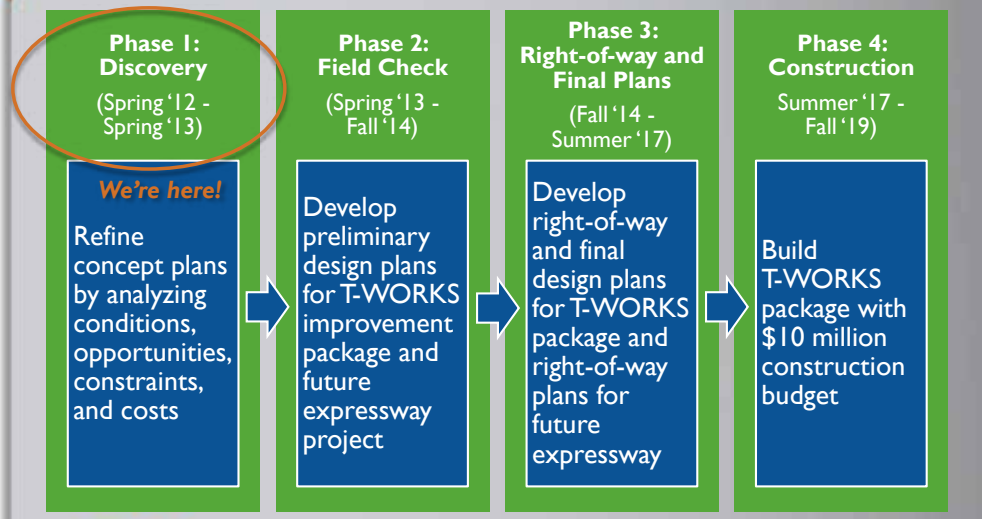
T-WORKS Funding

Funding for the **Miami County K-68 Expansion Project** is included among several Southeast Kansas highway expansion projects that will be provided through T-WORKS, Kansas' 10-year, \$8 billion transportation program designed to create jobs, preserve highway infrastructure, and provide multimodal economic development opportunities across the state. We worked with communities including Ottawa, Paola, Louisburg, and Franklin and Miami Counties to develop and select the projects for the program. The funds will be used to build improvements to K-68 in Miami County. We will continue to work with the community to determine where to construct improvements on K-68 between US-169 and US-69.

What's Next

KDOT and the consultant team will make additional refinements to the conceptual improvements for the highway based on community input, field survey results, and engineering analysis. Thereafter, a summary report will be developed for the **Miami County K-68 Expansion Project** that documents the results of Phase 1 (Discovery). The project will then move into Phase 2 (Field Check), which involves the development of preliminary design plans for both the T-Works project and the future expressway project.

Project Development Process and Timing



How You Can Help

If you are a property owner, public official, commuter, or another member of the corridor community, we want to hear from you. Talk to us about the opportunities and issues affecting K-68 as well as the impacts of potential improvements, so we can learn more about them. You can use the briefings and public meetings to share your thoughts. You can also call, email, and/or write the project team using the contact information provided on this fact sheet.

Continue to stay in touch with:

Hugh Bogle, KDOT Area Engineer
hugh@ksdot.org and (785) 448-5446

Steve Rockers, KDOT Project Manager
srockers@ksdot.org and (785) 296-1004

Priscilla Petersen, KDOT Public Affairs Manager
priscilla@ksdot.org and (620) 431-1000

Kristy Kelley, KDOT Community Affairs Manager
kristyk@ksdot.org and (620) 431-1000



Stay Informed

Scan the quick response (QR) code
or bookmark www.tinyurl.com/MiamiCountyK68

Follow us on Facebook

Kansas Department of Transportation-Southeast Kansas



KDOT Project No. 68-61 KA-2373-01

Note: This information can be made available in alternative accessible formats upon request. For information about obtaining an alternative format, contact the Bureau of Transportation Information, 700 SW Harrison St., 2nd Fl West, Topeka, KS 66603-3754 or phone 785-296-3585 (Voice)/Hearing Impaired – 711.

Miami County K-68

Welcome

Miami County K-68 Expansion Project
KDOT Project No. 68-61 KA-2373-01

Share Your Ideas with Us

During today's open house, we want to hear your ideas for improving the ***Miami County K-68 Expansion Project***. No formal presentations will be given.

Review the Displays

Several exhibits are on display today that describe the project including:

- **Project Overview:** Summarizes the ***Miami County K-68 Expansion Project***
- **Background:** Provides an overview of the ***K-68 Corridor Management Plan***
- **Timing:** Describes the process and schedule for project development
- **Corridor maps:** T-WORKS \$10 million improvement package (near-term) and future expressway project (long-term)
- **Accident History:** Provides locations of accidents along K-68 in Miami County
- **Traffic:** Daily traffic volumes along the corridor
- **Feedback:** Asks for your comments about the ***Miami County K-68 Expansion Project***
- **Contacts:** Contact information for the project team



Note: This information is available in alternative accessible formats. To obtain an alternative format, contact Transportation Information, Eisenhower Building, 700 SW Harrison, 2nd Floor West, Topeka, KS, 66603-3754, or (785) 296-3585 (Voice)/Hearing Impaired - 711.

KDOT Project No. 68-061 KA-2373-01

Overview

Miami County K-68 Expansion Project
KDOT Project No. 68-61 KA-2373-01



What's Happening

The Kansas Department of Transportation (KDOT) is preparing long-term plans to expand eight miles of existing K-68 in Miami County between US-169 on the west and US-69 on the east to a four-lane expressway.

Anticipated Improvements

Near-term improvements, such as changes needed for key intersections, development of frontage and/or reverse frontage roads, and more are scheduled to be constructed between spring 2018 and fall 2019.

T-WORKS Funding

The ***Miami County K-68 Expansion Project*** is funded for \$10 million dollars of construction. However, the funding is not enough to expand all eight miles of the road. KDOT will continue to work with local stakeholders to determine where to construct improvements on K-68 between US-169 and US-69.

Coordination

KDOT worked with communities including Ottawa, Paola, Louisburg, and Franklin and Miami Counties to develop and select the projects for the T-WORKS program. KDOT will use T-WORKS funds to build improvements for K-68 in Miami County.

Note: This information is available in alternative accessible formats. To obtain an alternative format, contact Transportation Information, Eisenhower Building, 700 SW Harrison, 2nd Floor West, Topeka, KS, 66603-3754, or (785) 296-3585 (Voice)/Hearing Impaired - 711.

KDOT Project No. 68-061 KA-2373-01



Background

Miami County K-68 Expansion Project
KDOT Project No. 68-61 KA-2373-01



K-68 Corridor Management Plan

Improving K-68 with a series of improvements at key locations plus a long-term goal of widening the highway overall is recommended in the **K-68 Corridor Management Plan**.

Vision

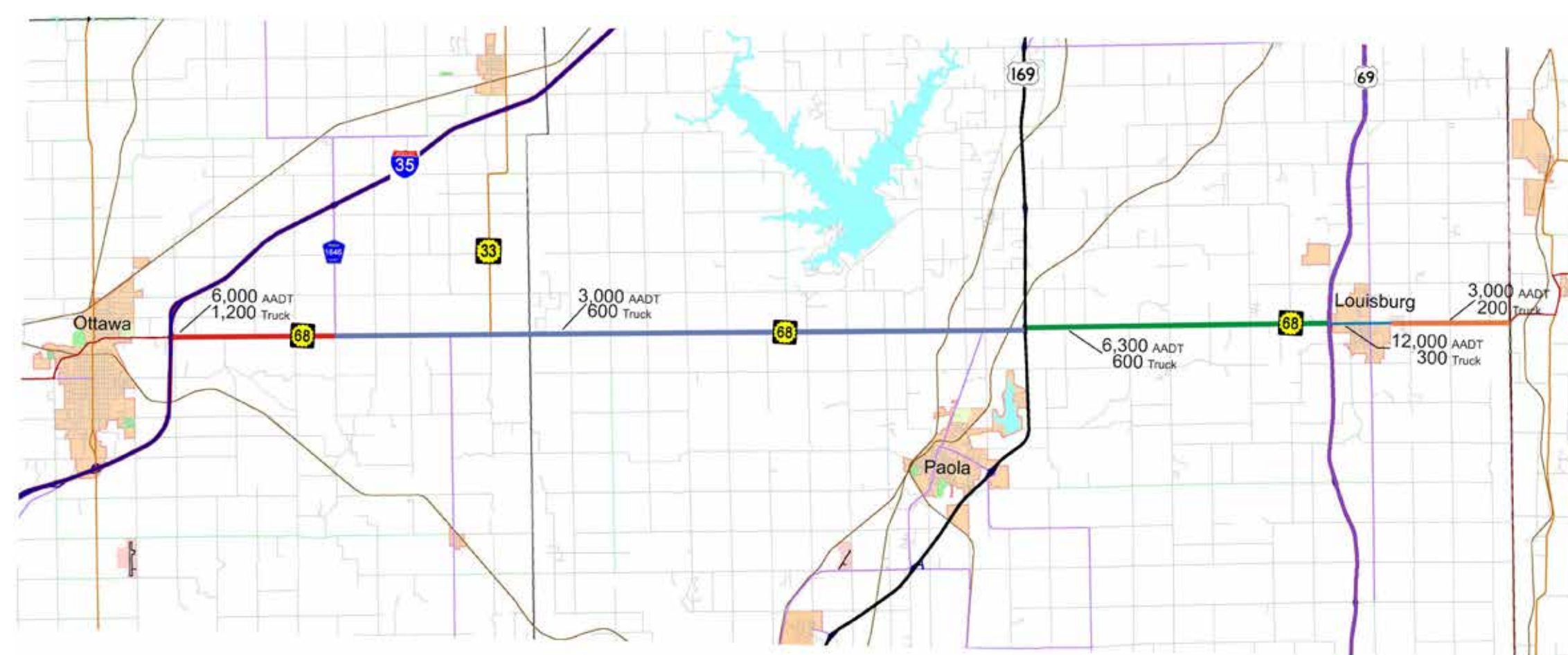
The plan describes the vision for K-68 in Miami and Franklin Counties and in the Cities of Ottawa, Paola, and Louisburg. Future land uses, traffic analysis, and more were used to develop the recommendations described in the document.

Public Involvement

Steering committee meetings, public officials' briefings, stakeholder meetings, public meetings, internet, and the media were used to share information about and gather feedback for the **K-68 Corridor Management Plan**.

Adoption

Ultimately, the plan was adopted by the two counties and three cities in 2009. The local jurisdictions have since signed interlocal cooperation agreements whereby they have committed to implementing the plan's recommendations.



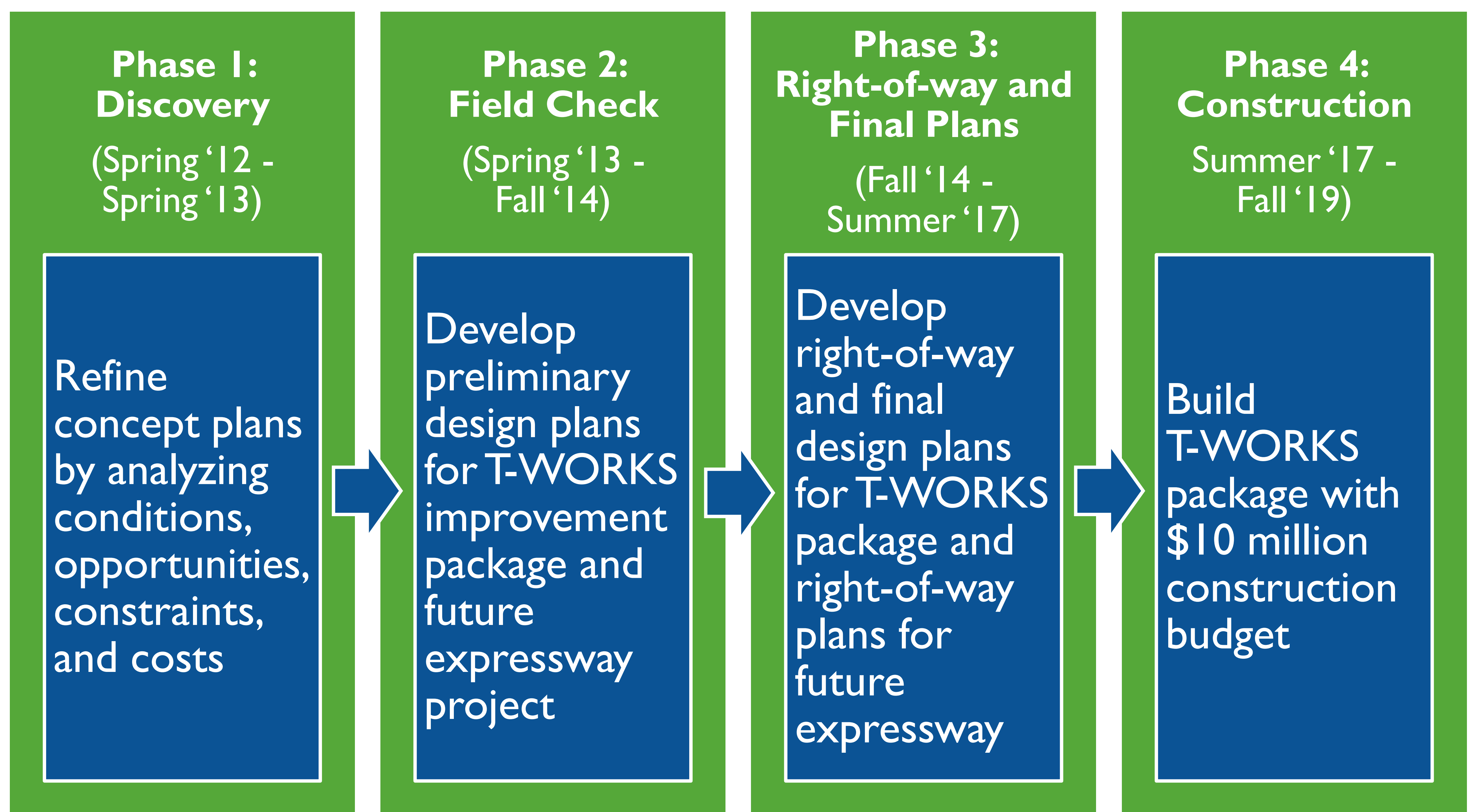
Note: This information is available in alternative accessible formats. To obtain an alternative format, contact Transportation Information, Eisenhower Building, 700 SW Harrison, 2nd Floor West, Topeka, KS, 66603-3754, or (785) 296-3585 (Voice)/Hearing Impaired - 711.

KDOT Project No. 68-061 KA-2373-01



Project Development Process

The **Miami County K-68 Expansion Project** is currently in Phase 1 (Discovery) of KDOT's four-phase project development process. Construction is anticipated to begin in about five years. At that time only near-term improvements, such as changes needed for key intersections, development of frontage and/or reverse frontage roads, and more will be built.



Note: This information is available in alternative accessible formats. To obtain an alternative format, contact Transportation Information, Eisenhower Building, 700 SW Harrison, 2nd Floor West, Topeka, KS, 66603-3754, or (785) 296-3585 (Voice)/Hearing Impaired - 711.

KDOT Project No. 68-061 KA-2373-01

Feedback

Miami County K-68 Expansion Project
KDOT Project No. 68-61 KA-2373-01

\$10 Million Construction Budget

The **Miami County K-68 Expansion Project** is funded for \$10 million of construction through T-WORKS. However, the funding is not enough to expand all eight miles of K-68 between US-69 and US-169 to four lanes. Help KDOT evaluate the kinds of improvements that should be included with the project and where they should be built.

Share Your Thoughts with Us

We want to hear your thoughts for improving the **Miami County K-68 Expansion Project**. **Use the tablet to take a quick survey!**

Rank Improvements 1 to 6

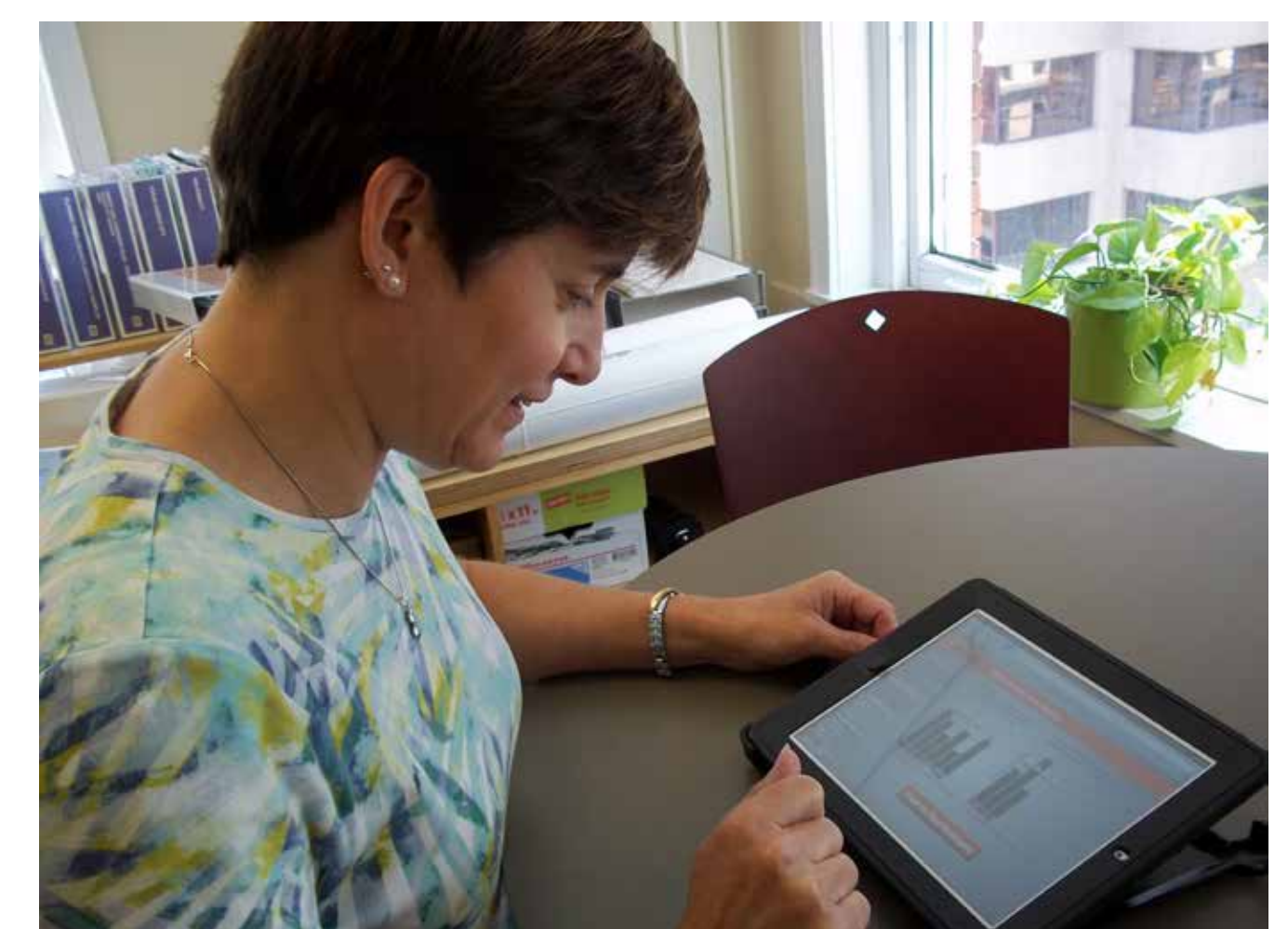
What kind of highway improvements are most important for K-68? Rank them from 1 (most important) to 6 (least important):

- **Safety**
- **Frontage Roads**
- **Turn Lanes**
- **Improved Traffic Flow**
- **Agricultural Accommodation**
- **Traffic Signals**

Rank Locations 1 to 4

Where along K-68 should T-WORKS improvements be built first? Rank locations 1 (first) to 4 (last):

- **In the US-169 Interchange Area**
- **In the Center of the Corridor**
- **In the US-69 Interchange Area**
- **In a Different Area of the Corridor**



Note: This information is available in alternative accessible formats. To obtain an alternative format, contact Transportation Information, Eisenhower Building, 700 SW Harrison, 2nd Floor West, Topeka, KS, 66603-3754, or (785) 296-3585 (Voice)/Hearing Impaired - 711.

KDOT Project No. 68-061 KA-2373-01



Contacts

Miami County K-68 Expansion Project
KDOT Project No. 68-61 KA-2373-01

The screenshot shows the TWORKS website interface. At the top, there's a navigation bar with links: ABOUT, INVESTMENTS, PROJECTS, \$8M PROMISE, LOCAL PROGRAMS, NEWS, and CONTACT. The main content area is titled 'Project Profile' and features a map of the project location in Miami County, Kansas, showing the K-68 corridor. Below the map, there's a table with project details and costs.

Project Details - Construction Project	
Route:	K-68
County:	Miami
Project Number:	KA-2373-01
Project Type:	Expansion
Location:	K-68: from US-169, East to US-69 at Louisburg
Scope:	Plan Development for a 4-Lane Expressway and construction improvements.
Length:	8 miles
Scheduled Start Date:	March 2, 2018

Project Cost	
Construction:	\$10,000,000
Design:	\$725,000
Right-of-Way:	\$200,000
Utilities:	\$200,000
Inspection:	\$750,000
Total:	\$11,875,000

Questions or Comments

For more information about the **Miami County K-68 Expansion Project**:

Scan the quick response (QR) code



Bookmark and save the web page

www.tinyurl.com/MiamiCountyK68

Follow us on Facebook

at Kansas Department of Transportation-
Southeast Kansas

Continue to stay in touch with:

- Hugh Bogle, KDOT Area Engineer at hugh@ksdot.org and (785) 448-5446
- Steve Rockers, KDOT Project Manager at srockers@ksdot.org and (785) 296-1004
- Priscilla Petersen, KDOT Public Affairs Manager at priscilla@ksdot.org and (620) 431-1000
- Kristy Kelley, KDOT Community Affairs Manager at kristyk@ksdot.org and (620) 431-1000

Note: This information is available in alternative accessible formats. To obtain an alternative format, contact Transportation Information, Eisenhower Building, 700 SW Harrison, 2nd Floor West, Topeka, KS, 66603-3754, or (785) 296-3585 (Voice)/Hearing Impaired - 711.

KDOT Project No. 68-061 KA-2373-01

