

# Welcome

## US-166 Expansion Project in Cherokee County

### Tell Us What You Think

Today's meeting is an open house for the US-166 Expansion project in Cherokee County. Plans for expanding US-166 in Cherokee County as a four-lane freeway (see example below) from the US-400/US-166 junction on the west to the Missouri-Kansas state line on the east are on display. No formal presentations will be given.





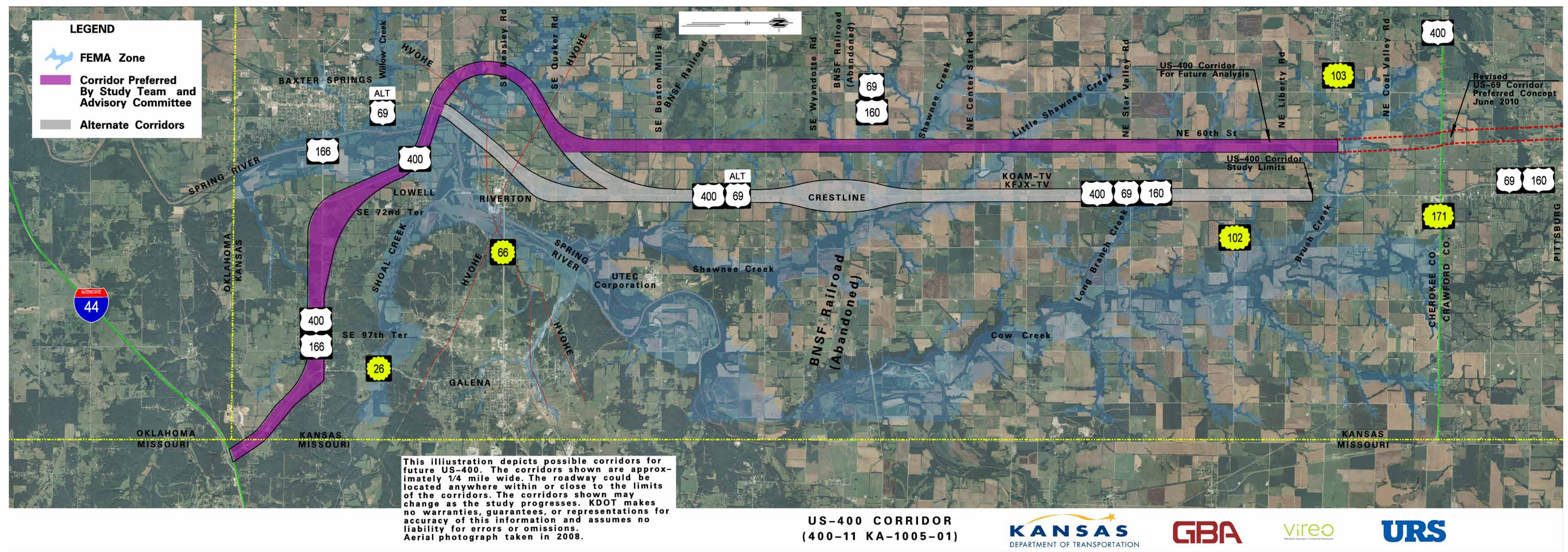
# Background

## US-166 Expansion Project in Cherokee County

### US-400 Corridor Study

The US-400 Corridor Study was completed in 2010. During the process, KDOT and the Citizens Advisory Committee reviewed multiple corridor options for connecting the Crawford County Bypass to I-44. Their recommendation affects US-166 and is shown in purple on the map. Other corridor options are shown in gray on the same map.

The preferred corridor runs roughly one mile west of the current US-400 to connect the Crawford County- Cherokee County Line to I-44. It also curves west before linking with the US-69/US-400 split. This area starts near Southeast Quaker Road and goes to the Spring River before traveling back east.





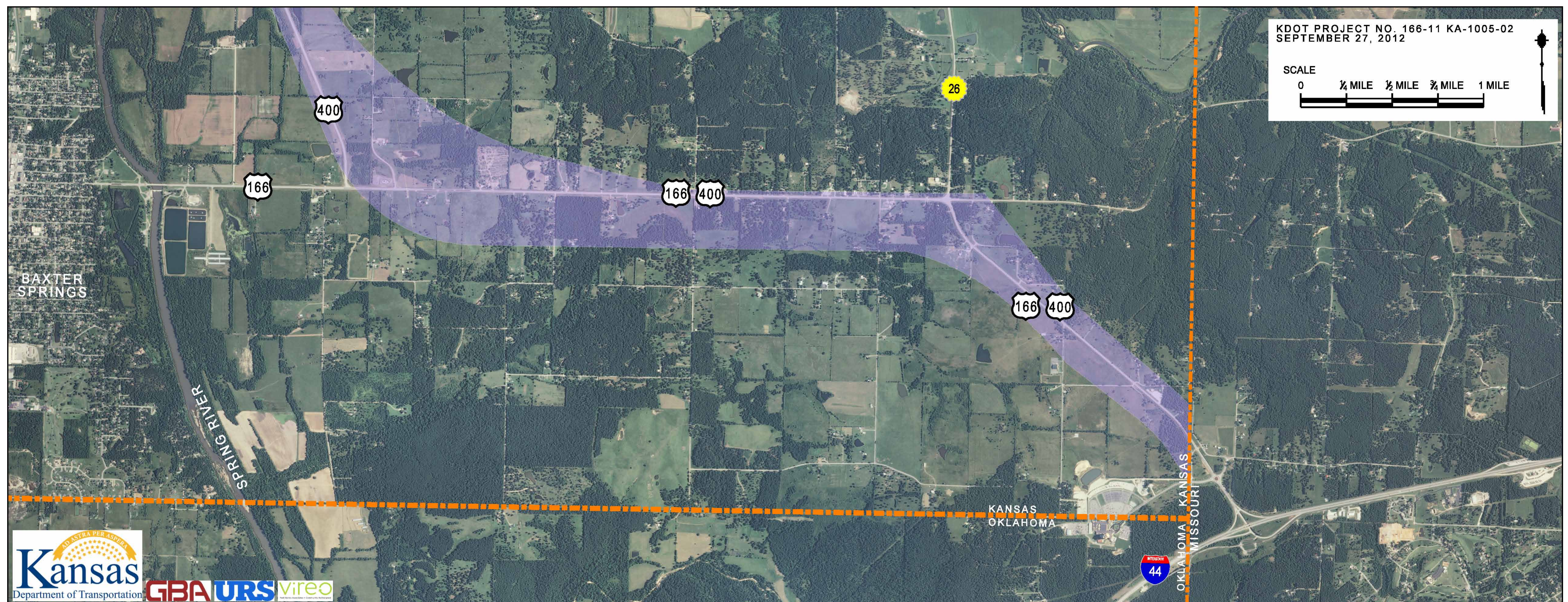
# Purpose

## US-166 Expansion Project in Cherokee County

### Why Improve US-166

The purpose of the US-166 Expansion project is to design and construct an improved connection between state line and the US-400/US-166 junction.

The new US-166 will be a freeway. It will be developed so that existing right-of-way might be utilized (where possible), avoid environmental impacts to the existing floodplain, respond to local accessibility concerns, and improve safety for motorists.







# Schedule

## US-166 Expansion Project in Cherokee County

### Project Development Continues

The project is currently transitioning from Phase 1 - Discovery to Phase 2 - Field Check (preliminary design) of the multi-step, project development process that is described in the table below. Construction is anticipated to begin during the fall of 2017.

Timeframe			
Phase 1	Phase 2	Phase 3	Phase 4
Discovery	Field Check	Final Plans	Construction
Fall 2011 - Fall 2012	Fall 2012 - Winter 2014	Winter 2014 - Spring 2017	Scheduled to begin Fall 2017
Refine the boundaries for the US-166 project area.  Share project information with the community via the Citizen Advisory Committee, T-WORKS website, and other media.	Develop a refined improvement concept and preliminary design plans.  Share project information with the community via the Citizen Advisory Committee, T-WORKS website, and other media.	Develop final design plans for the US-166 expansion.  Share project information with the community via the Citizen Advisory Committee, T-WORKS website, and other media.	Expand US-166 with T-WORKS funds (\$38 million in construction costs).  Share project information with the community via the Citizen Advisory Committee, T-WORKS website, and other media.



# Comments

## US-166 Expansion Project in Cherokee County

### Select Two Improvements

Tell us which types of improvements are most important for US-166:

- Safety for motorists
- Improved pavement condition
- Passing opportunities
- Frontage Roads
- Greater economic development
- Other

### Select One Impact

Tell us which potential impact of the US-166 project is your greatest concern:

- Impacts to access
- Impacts to farmland, cultural, or natural resources
- Impacts to homes or businesses

### Why?

Elaborate on your answers to the questions.





## US-166 Expansion Project in Cherokee County

- Steve Rockers, Project Manager, at [srockers@ksdot.org](mailto:srockers@ksdot.org) or (785) 296-1004
- George Dockery, Area Engineer, at [gdockery@ksdot.org](mailto:gdockery@ksdot.org) or (620) 231-7560
- Priscilla Petersen, Public Affairs Manager, at [priscilla@ksdot.org](mailto:priscilla@ksdot.org) or (620) 431-1000
- Kristy Kelley, Community Affairs Manager, at [kristyk@ksdot.org](mailto:kristyk@ksdot.org) or (620) 431-1000

