

Kansas Map Changes 2010 Annual Report

KANSAS DEPARTMENT OF TRANSPORTATION

ROUTE	COUNTY	PROJECT	WORK TYPE	EST COMPL	ACCESS CONTROL**
K 18	RILEY	KA0410-03	GR&SU	12/31/2010	F



****Access Control Codes: "F" = Full Control, "P" =Partial Control, "N/A" = Not Applicable**

Contract I.D. 510032091

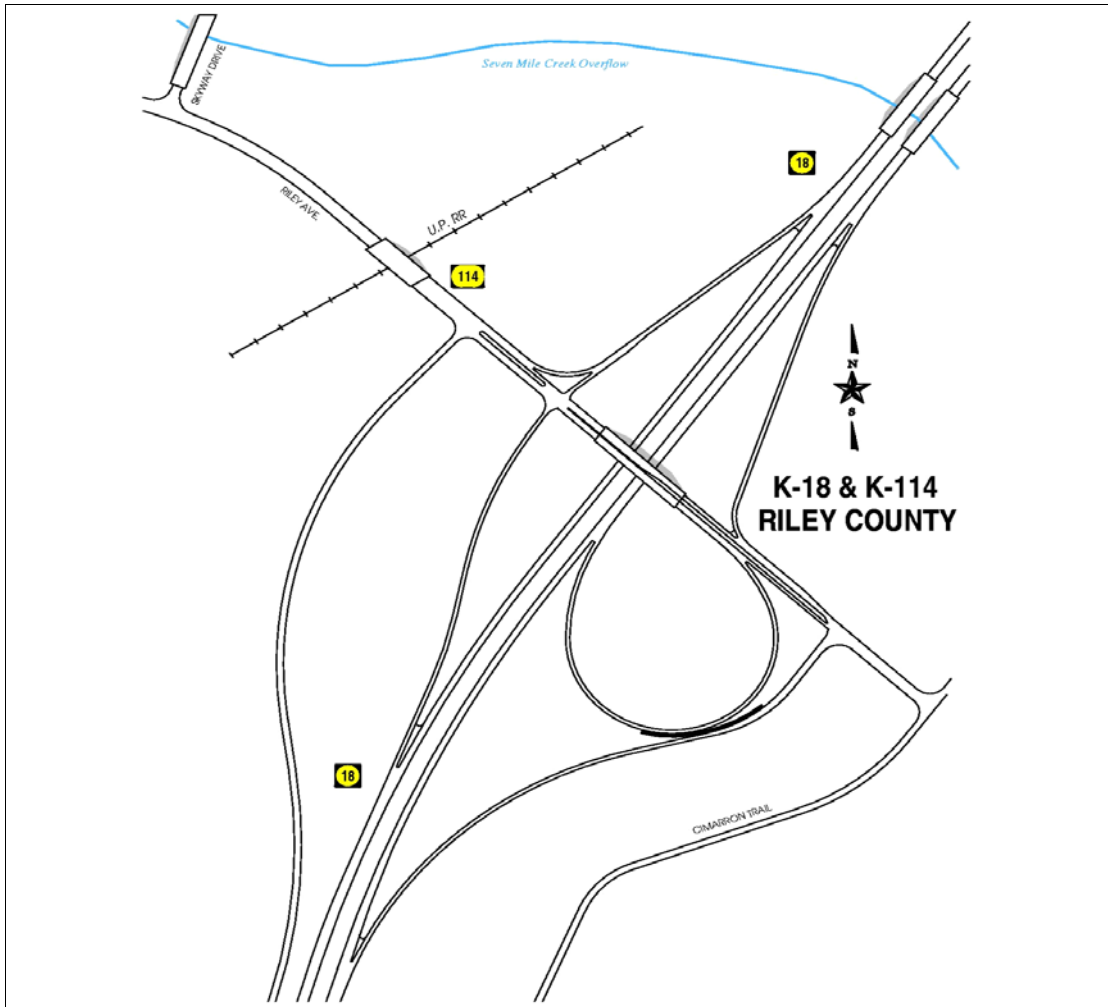
DESCRIPTION

Construction of a 4-Lane Freeway Section with an interchange at K-114. Reconstruct K-114 from 0.1 miles west of Dry Creek, south to K-18.

The Kansas D.O.T. makes no warranties, guarantees, or representations for accuracy of this information and assumes no liability for errors or omissions.

KANSAS DEPARTMENT OF TRANSPORTATION

ROUTE	COUNTY	PROJECT	WORK TYPE	EST COMPL	ACCESS CONTROL**
K 18	RILEY	KA0410-03	INTERCHANGE	12/31/2010	F



****Access Control Codes: "F" = Full Control, "P" =Partial Control, "N/A" = Not Applicable**

Contract I.D. 510032091

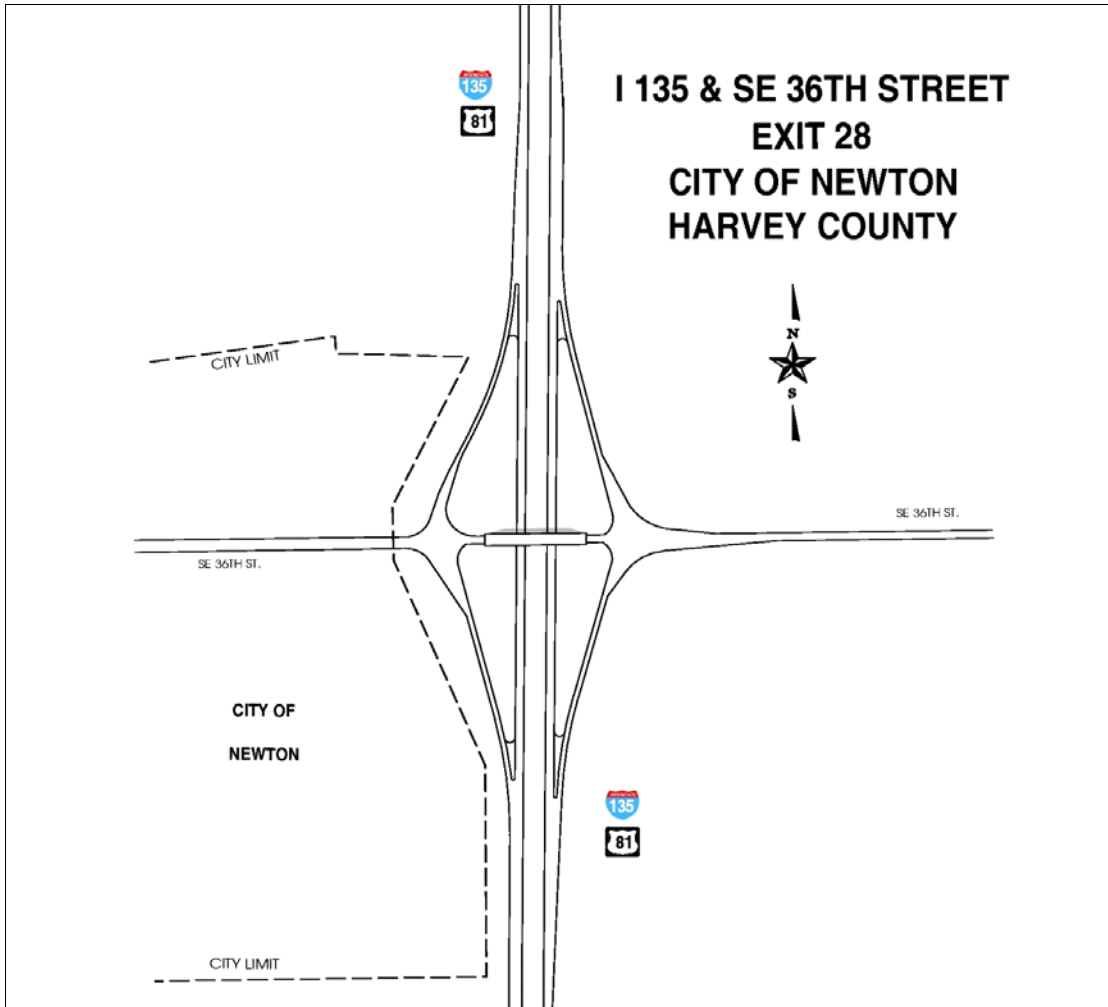
DESCRIPTION

New interchange at the junction of K-18 & K-114.

The Kansas D.O.T. makes no warranties, guarantees, or representations for accuracy of this information and assumes no liability for errors or omissions.

KANSAS DEPARTMENT OF TRANSPORTATION

ROUTE	COUNTY	PROJECT	WORK TYPE	EST COMPL	ACCESS CONTROL**
I 135	HARVEY	KA0052-02	INT. GR.&SU	12/2/2010	F



****Access Control Codes: "F" = Full Control, "P" =Partial Control, "N/A" = Not Applicable**

Contract I.D.

DESCRIPTION

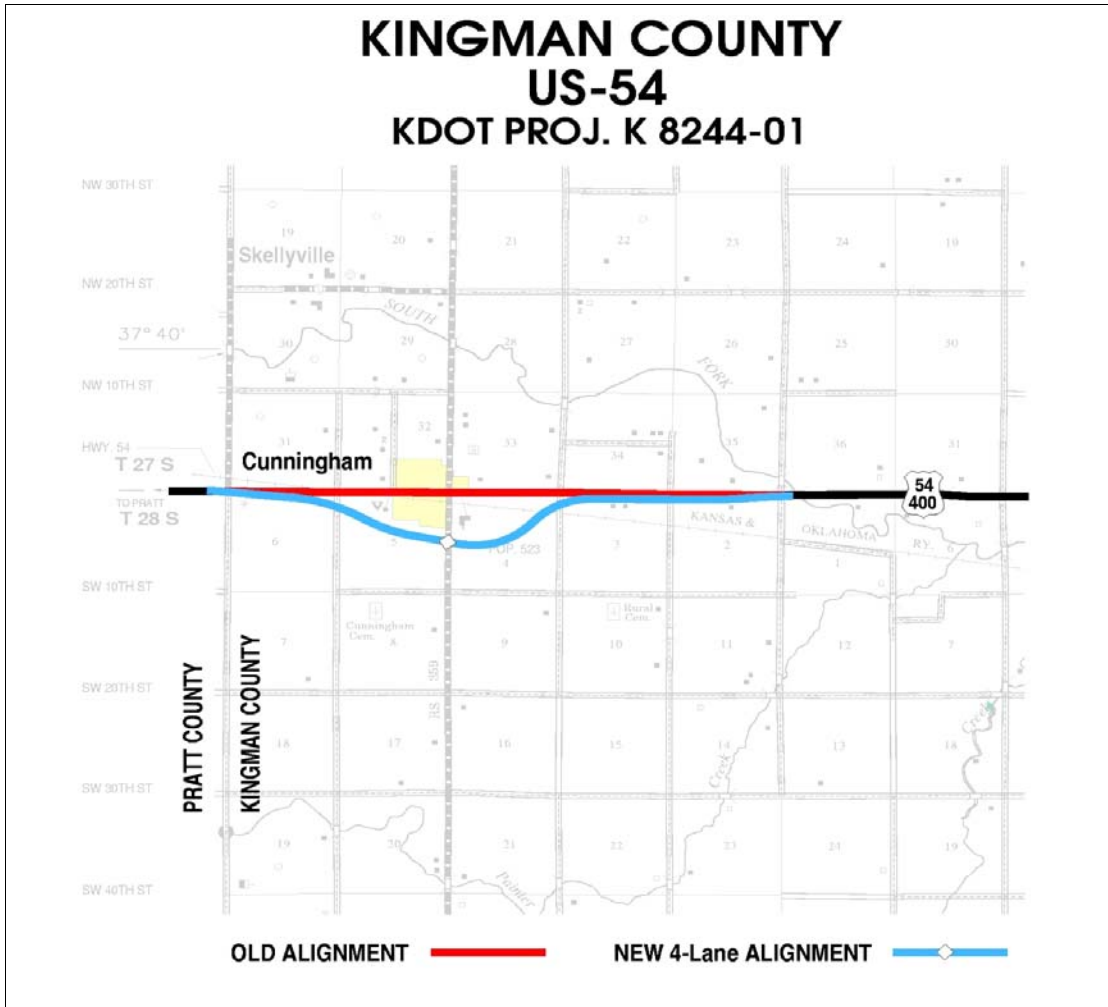
RE-CONSTRUCTION OF RAMP TERMINI WITH GREATLY INCREASED TURNING RADIUS' WHERE RAMPS MEET S.E. 36TH STREET.

The Kansas D.O.T. makes no warranties, guarantees, or representations for accuracy of this information and assumes no liability for errors or omissions.

KANSAS DEPARTMENT OF TRANSPORTATION

ACCESS CONTROL**

ROUTE	COUNTY	PROJECT	WORK TYPE	EST COMPL	ACCESS CONTROL**
US 54	KINGMAN	K 8244-04	INT. GR.&SU	11/29/2010	F



**Access Control Codes: "F" = Full Control, "P" =Partial Control, "N/A" = Not Applicable

Contract I.D. 510042565

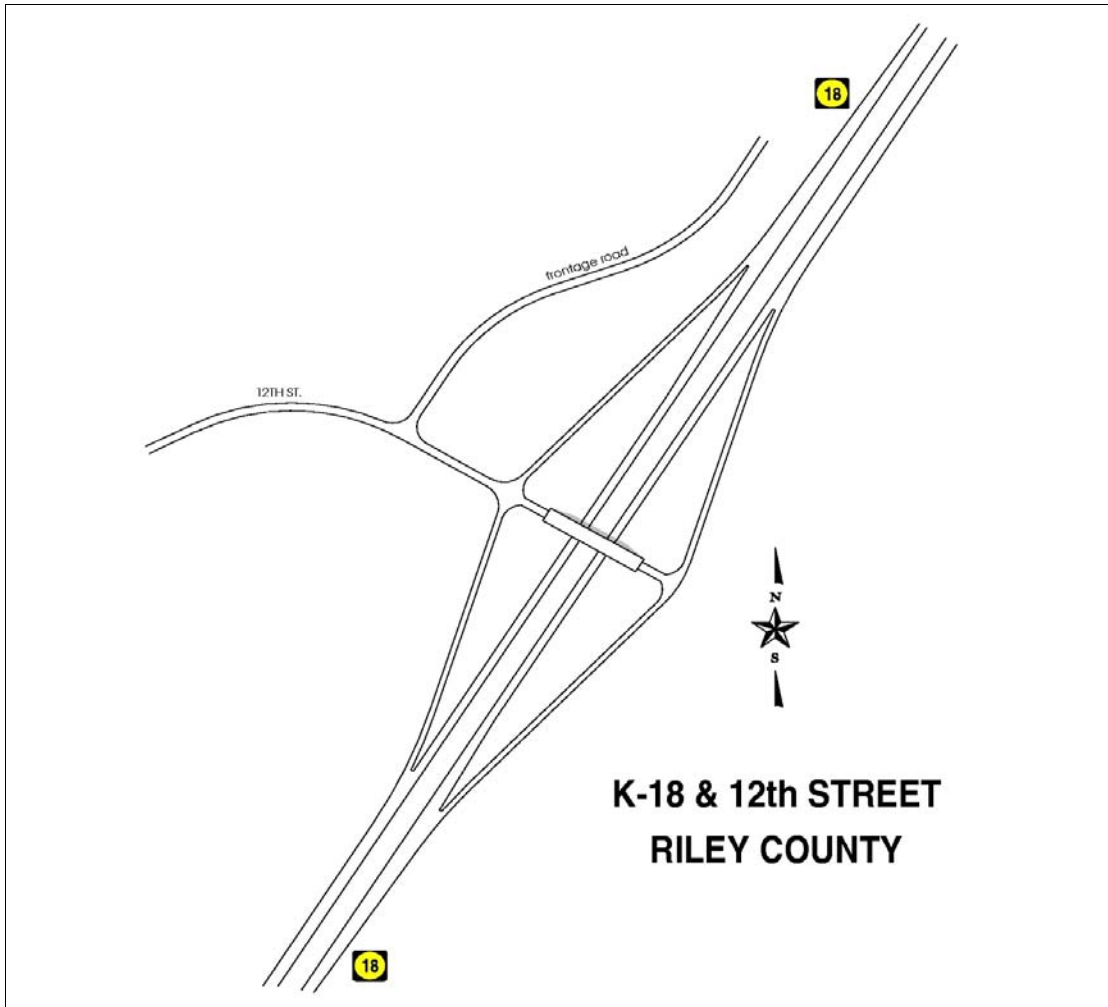
DESCRIPTION

New 4-lane divided, access controlled alignment from Pratt / Kingman County line, east to 4 miles east of Cunningham. Includes a new interchange at RS 359 near south edge of Cunningham.

The Kansas D.O.T. makes no warranties, guarantees, or representations for accuracy of this information and assumes no liability for errors or omissions.

KANSAS DEPARTMENT OF TRANSPORTATION

ROUTE	COUNTY	PROJECT	WORK TYPE	EST COMPL	ACCESS CONTROL**
K 18	RILEY	K 6796-02	INT. GR.&SU	11/17/2010	F



**Access Control Codes: "F" = Full Control, "P" =Partial Control, "N/A" = Not Applicable

Contract I.D.

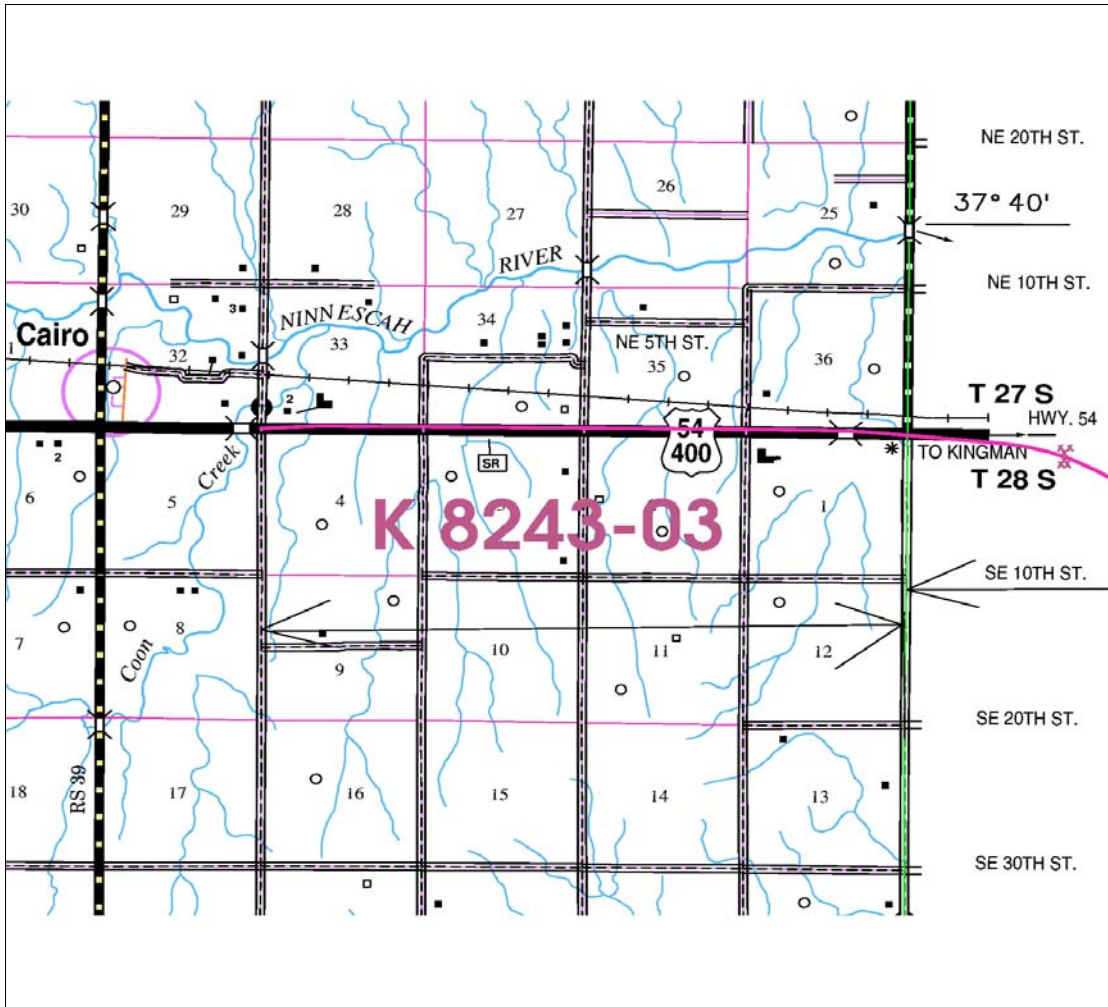
DESCRIPTION

NEW INTERCHANGE AT K-18 AND 12TH STREET NEAR OGDEN

The Kansas D.O.T. makes no warranties, guarantees, or representations for accuracy of this information and assumes no liability for errors or omissions.

KANSAS DEPARTMENT OF TRANSPORTATION

ROUTE	COUNTY	PROJECT	WORK TYPE	EST COMPL	ACCESS CONTROL**
US 54	PRATT	K 8243-03	GR&SU	11/4/2010	F



**Access Control Codes: "F" = Full Control, "P" =Partial Control, "N/A" = Not Applicable

Contract I.D. 508092505

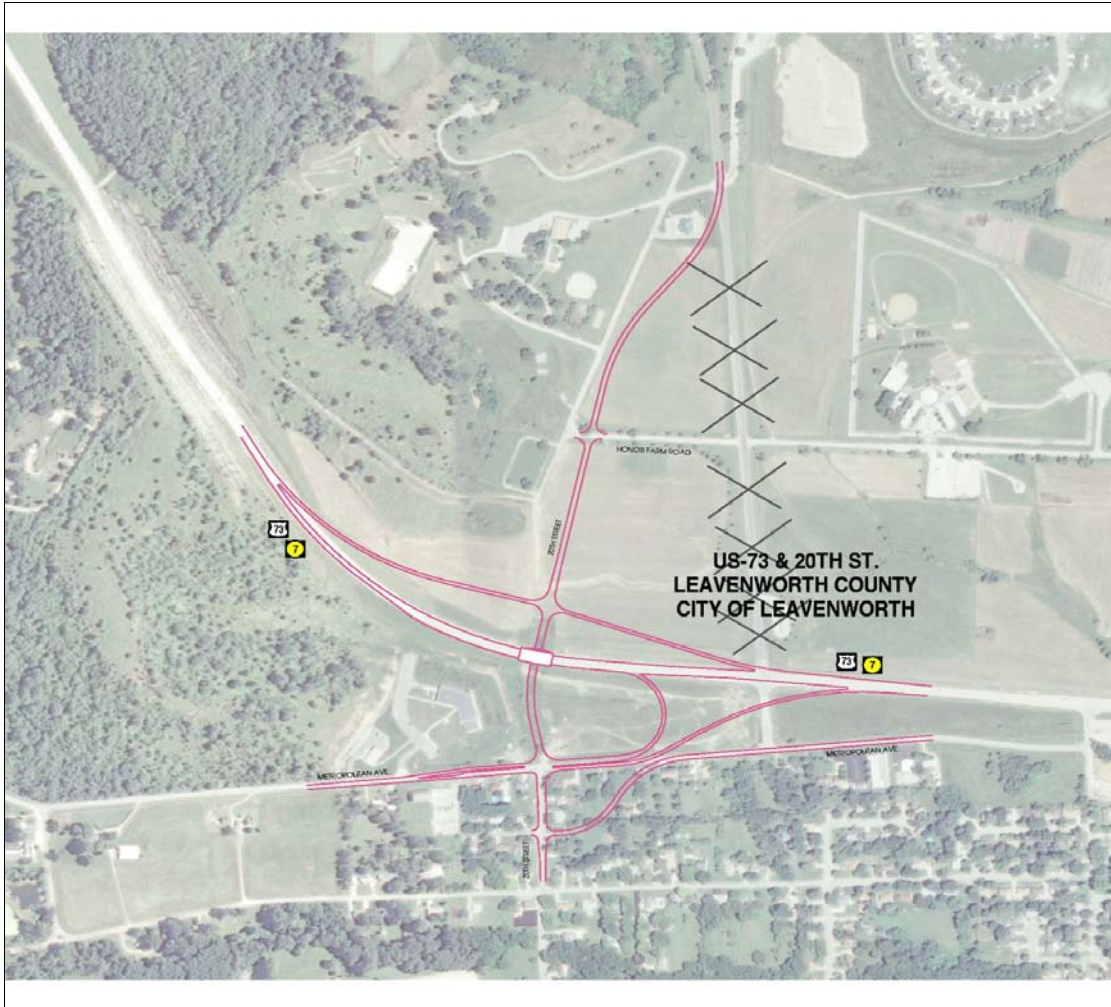
DESCRIPTION

RE-CONSTRUCTION AND SOME NEW ALIGNMENT BETWEEN CAIRO AND EAST COUNTY LINE. - 4-LANE DIVIDED

The Kansas D.O.T. makes no warranties, guarantees, or representations for accuracy of this information and assumes no liability for errors or omissions.

KANSAS DEPARTMENT OF TRANSPORTATION

ROUTE	COUNTY	PROJECT	WORK TYPE	EST COMPL	ACCESS CONTROL**
US 73	LEAVENWORTH	K 8003-01	INT. GR.&SU	10/20/2010	F



****Access Control Codes: "F" = Full Control, "P" =Partial Control, "N/A" = Not Applicable**

Contract I.D. 509042061

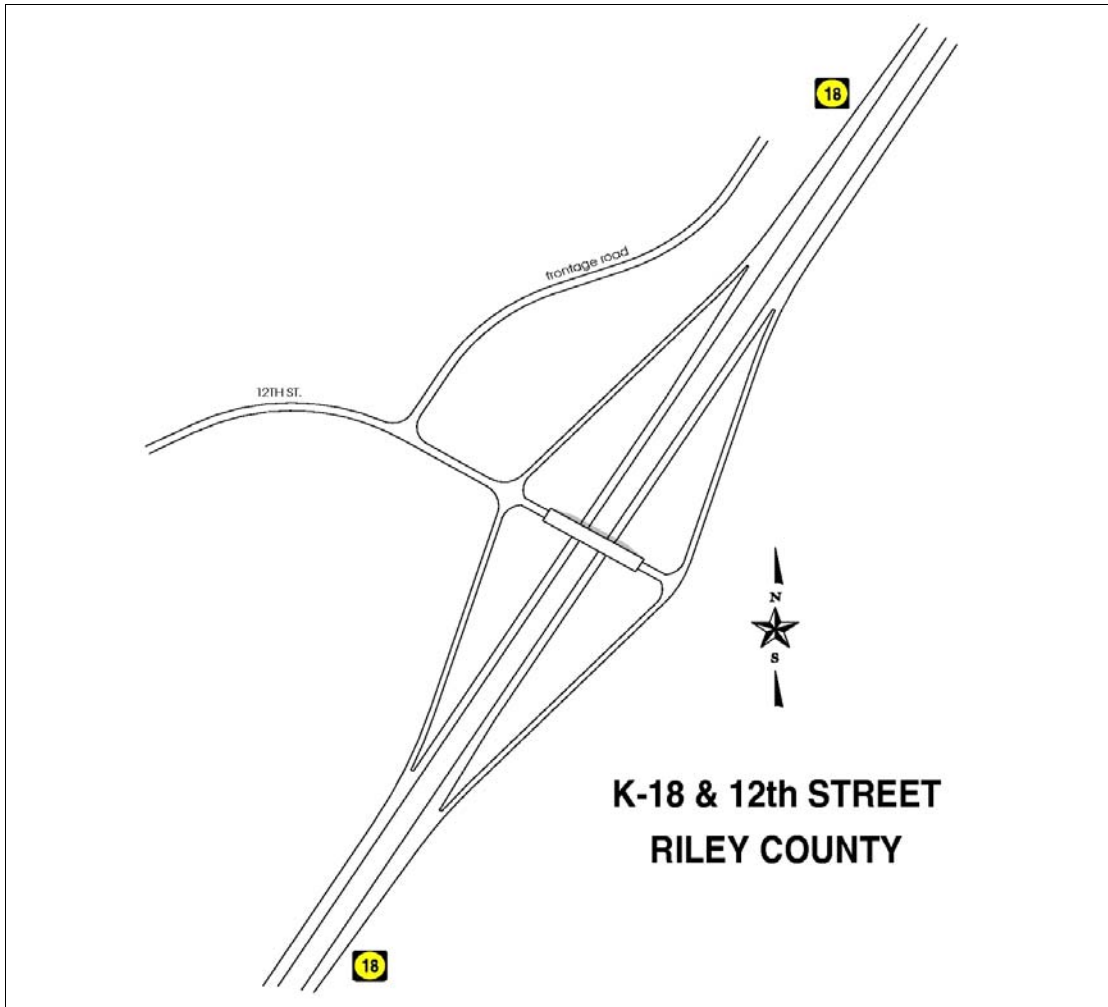
DESCRIPTION

New interchange on US-73 at 20th St. in Leavenworth at northwest corner of the city. This project includes some re-alignment of Metropolitan Ave. where it connects to 20th St., and also extends 20th St. to the north about half a mile to connect to the old US-73 hiway alignment (Santa Fe Trail Rd.) The portion of existing Santa Fe trail form this new junction, south to Metropolitan Rd., has been removed as shown by the gray 'X' marks on the above drawing.

The Kansas D.O.T. makes no warranties, guarantees, or representations for accuracy of this information and assumes no liability for errors or omissions.

KANSAS DEPARTMENT OF TRANSPORTATION

ROUTE	COUNTY	PROJECT	WORK TYPE	EST COMPL	ACCESS CONTROL**
K 18	GEARY	K 6796-02	INTERCHANGE	10/1/2010	F



****Access Control Codes: "F" = Full Control, "P" =Partial Control, "N/A" = Not Applicable**

Contract I.D. 508082041

DESCRIPTION

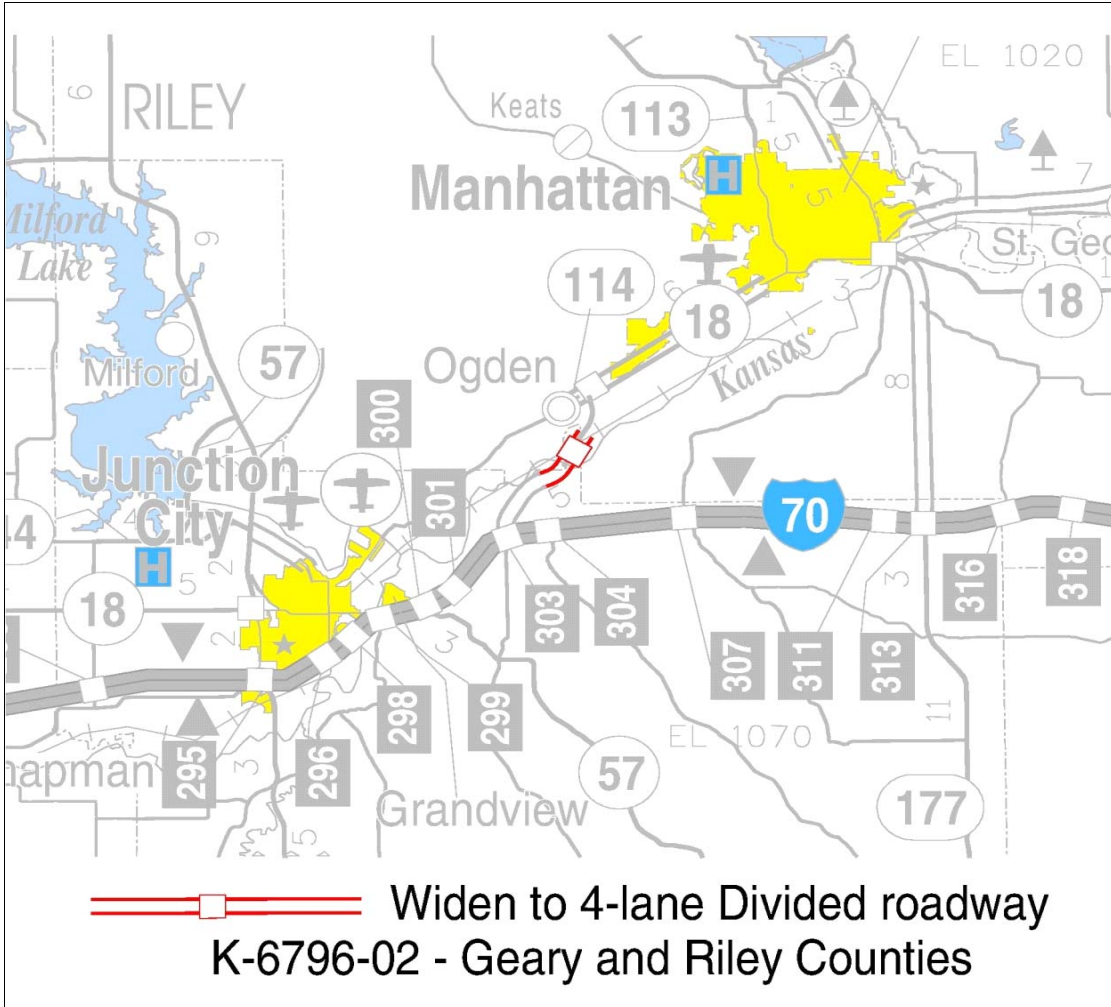
NEW INTERCHANGE AT 12TH STREET NEAR CITY OF OGDEN TO SERVE FORT RILEY.

The Kansas D.O.T. makes no warranties, guarantees, or representations for accuracy of this information and assumes no liability for errors or omissions.

KANSAS DEPARTMENT OF TRANSPORTATION

ACCESS CONTROL**

ROUTE	COUNTY	PROJECT	WORK TYPE	EST COMPL	ACCESS CONTROL**
K 18	GEARY / RILEY	K 6796-02	GR&SU	10/1/2010	F



**Access Control Codes: "F" = Full Control, "P" =Partial Control, "N/A" = Not Applicable

Contract I.D. 508082041

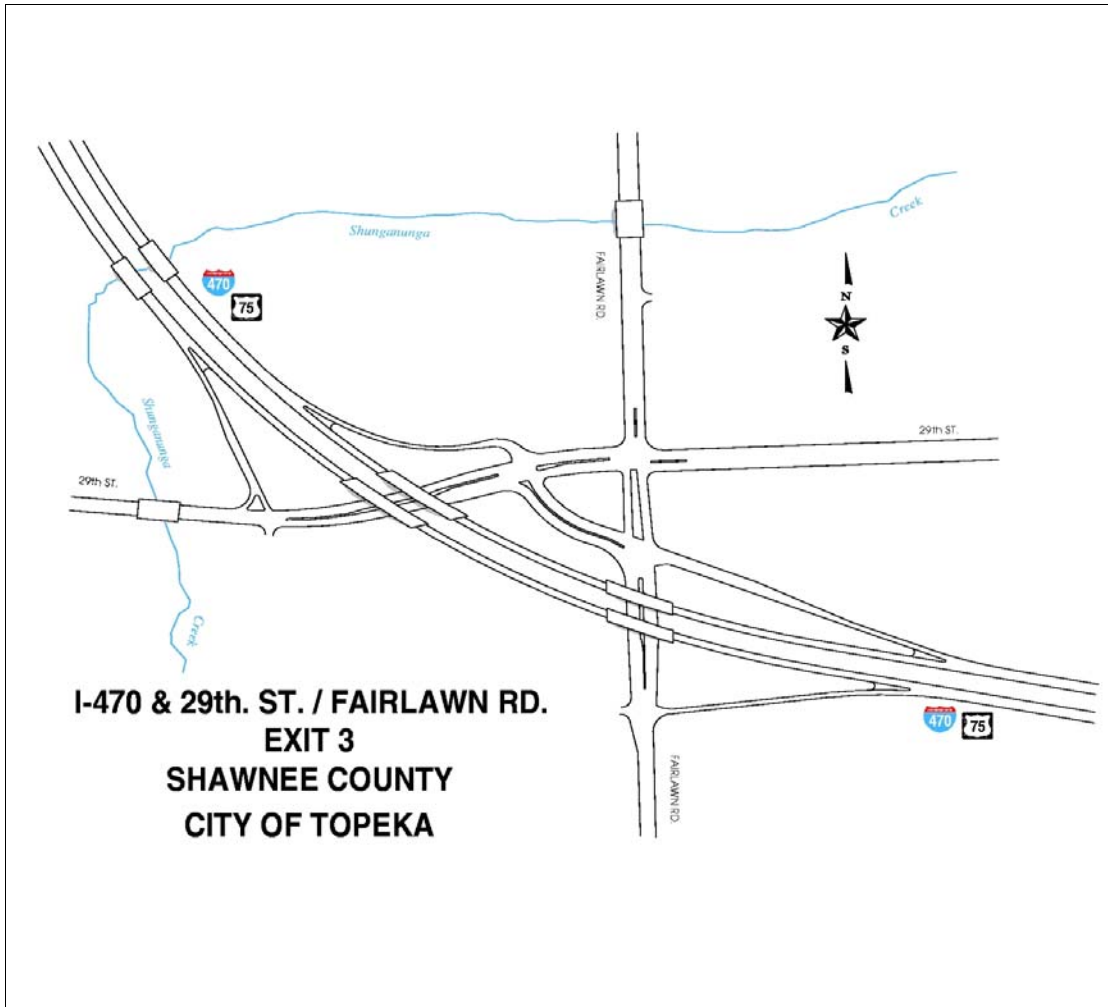
DESCRIPTION

ADDITIONAL LANES ADDED TO K-18 FROM 1/2 MILE SOUTH OF THE KANSAS RIVER, THEN NORTH APPROXIMATELY 1.5 MILES. INCLUDES A NEW INTERCHANGE AT 12TH STREET.

The Kansas D.O.T. makes no warranties, guarantees, or representations for accuracy of this information and assumes no liability for errors or omissions.

KANSAS DEPARTMENT OF TRANSPORTATION

ROUTE	COUNTY	PROJECT	WORK TYPE	EST COMPL	ACCESS CONTROL**
I470	SHAWNEE	U 2008-01	INT. GR.&SU	9/1/2010	F



****Access Control Codes: "F" = Full Control, "P" =Partial Control, "N/A" = Not Applicable**

Contract I.D.

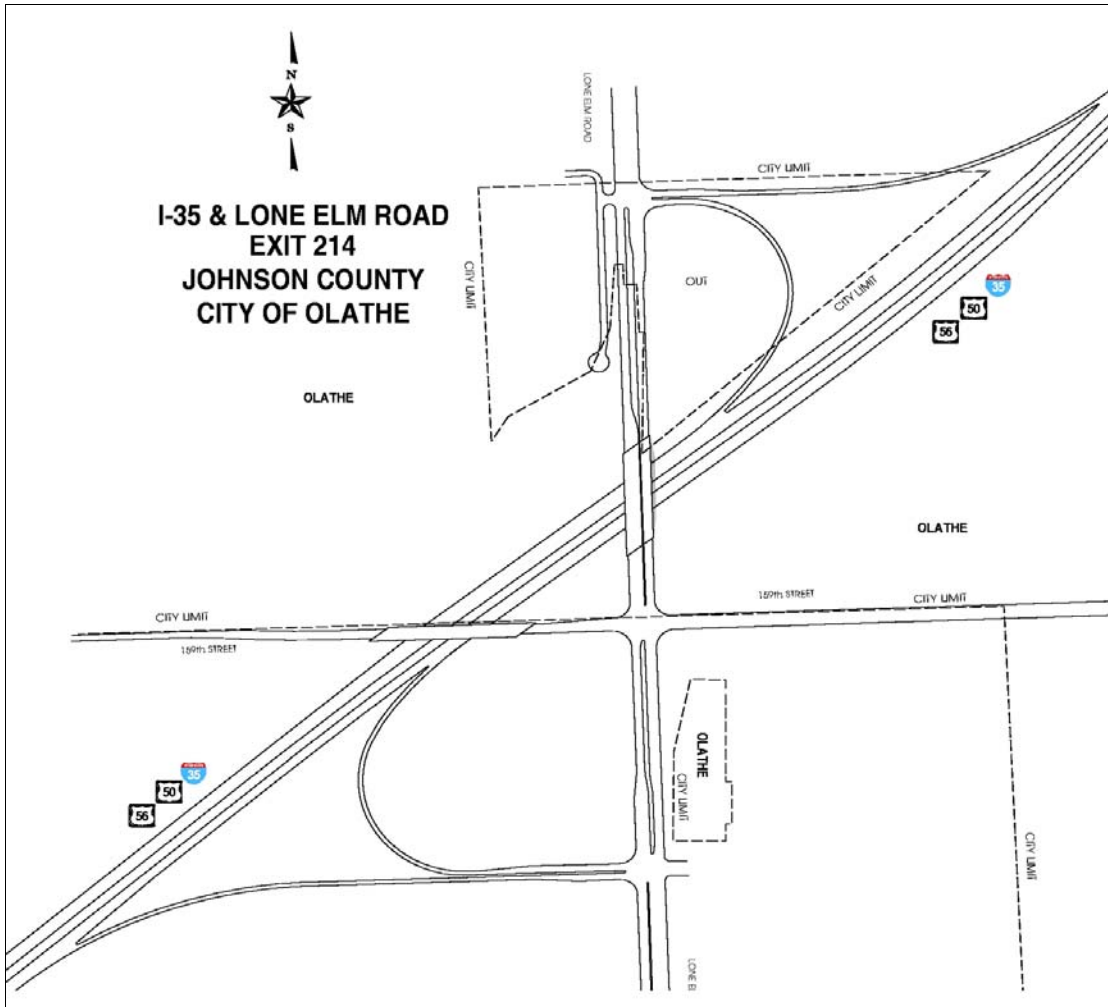
DESCRIPTION

Improvements near interchange at I-470 and Fairlawn/29th St. in Topeka. Additional surface connector road added in S.W. quadrant of 29th & Fairlawn intersection to facilitate turning movements from westbound I-470 to westbound 29th Street.

The Kansas D.O.T. makes no warranties, guarantees, or representations for accuracy of this information and assumes no liability for errors or omissions.

KANSAS DEPARTMENT OF TRANSPORTATION

ROUTE	COUNTY	PROJECT	WORK TYPE	EST COMPL	ACCESS CONTROL**
I 35	JOHNSON	K 9014-01	INT. GR.&SU	7/1/2010	F



****Access Control Codes: "F" = Full Control, "P" =Partial Control, "N/A" = Not Applicable**

Contract I.D. 508021011

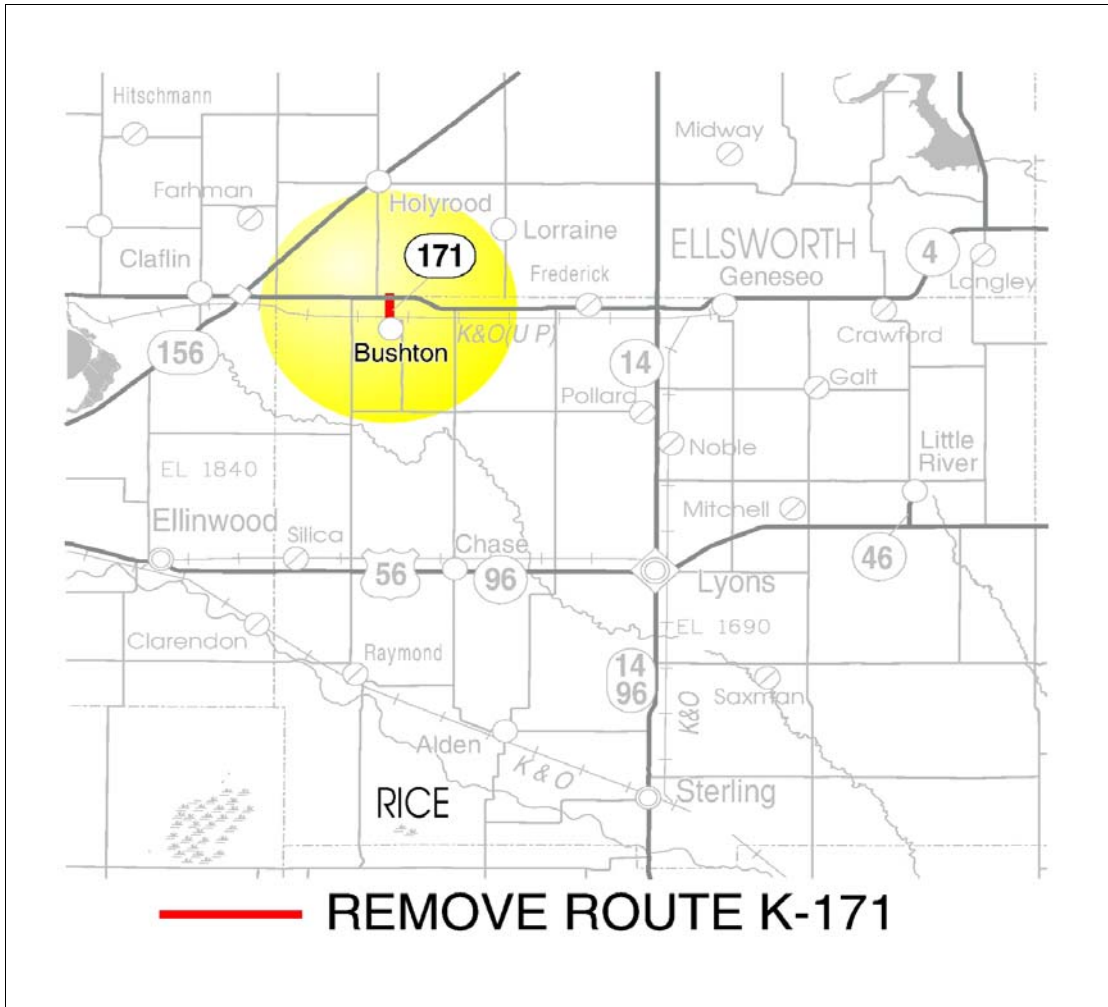
DESCRIPTION

NEW INTERCHANGE IN OLATHE AT I 35 AND LONE ELM ROAD-- EXIT 214

The Kansas D.O.T. makes no warranties, guarantees, or representations for accuracy of this information and assumes no liability for errors or omissions.

KANSAS DEPARTMENT OF TRANSPORTATION

ROUTE	COUNTY	PROJECT	WORK TYPE	EST COMPL	ACCESS CONTROL**
K 171	RICE	C 4557-01	REMOVE RTE	5/1/2010	N/A



****Access Control Codes: "F" = Full Control, "P" =Partial Control, "N/A" = Not Applicable**

Contract I.D. 509114545

DESCRIPTION

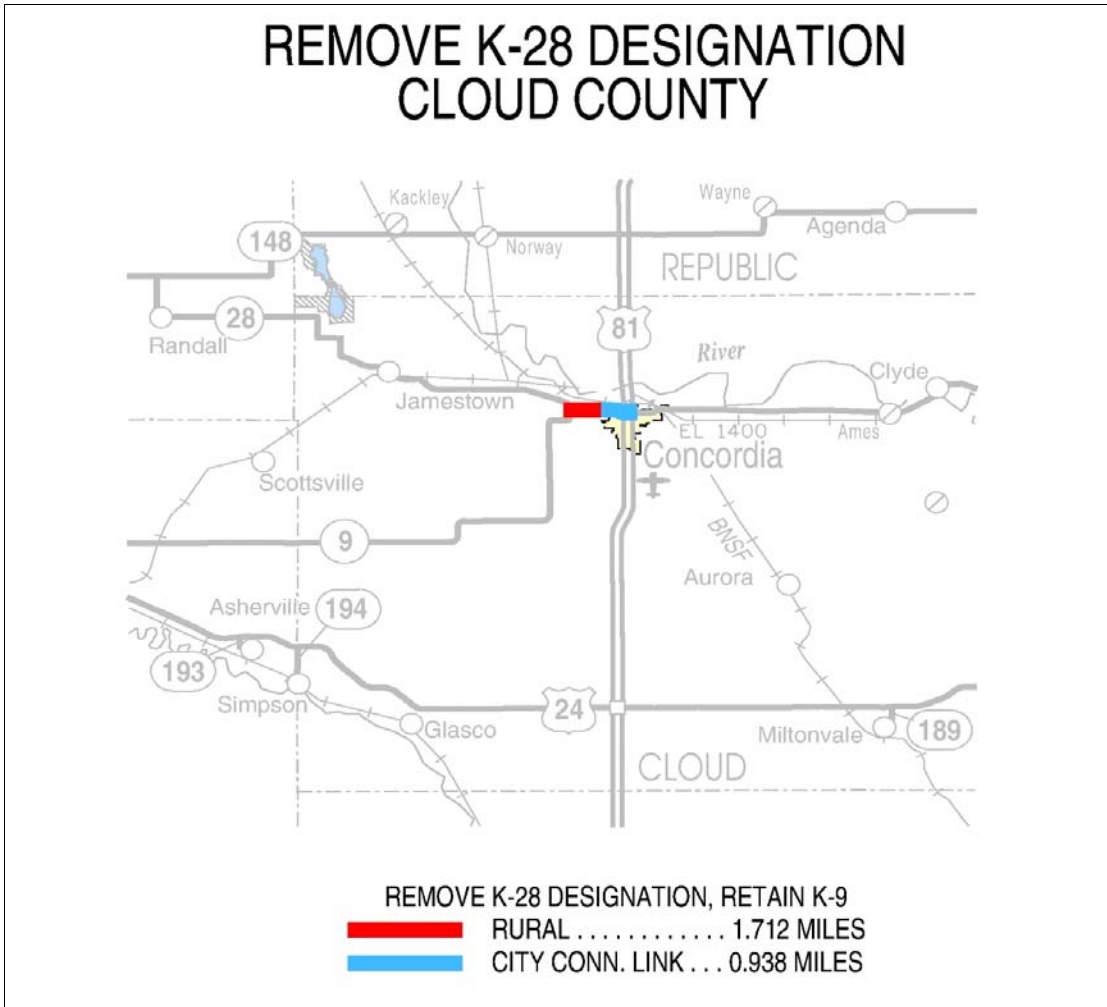
REMOVE ROUTE K-171 FROM STATE SYSTEM. Road will revert to county authority at completion of project 80-C-4557-01, which is a resurfacing project for Main St. in the city of Bushton. This is an ARRA funded project.

The Kansas D.O.T. makes no warranties, guarantees, or representations for accuracy of this information and assumes no liability for errors or omissions.

KANSAS DEPARTMENT OF TRANSPORTATION

ACCESS CONTROL**

ROUTE	COUNTY	PROJECT	WORK TYPE	EST COMPL	ACCESS CONTROL**
K 28	CLOUD	N/A	SHORTEN RTE.	4/1/2010	N/A



**Access Control Codes: "F" = Full Control, "P" =Partial Control, "N/A" = Not Applicable

Contract I.D. N/A

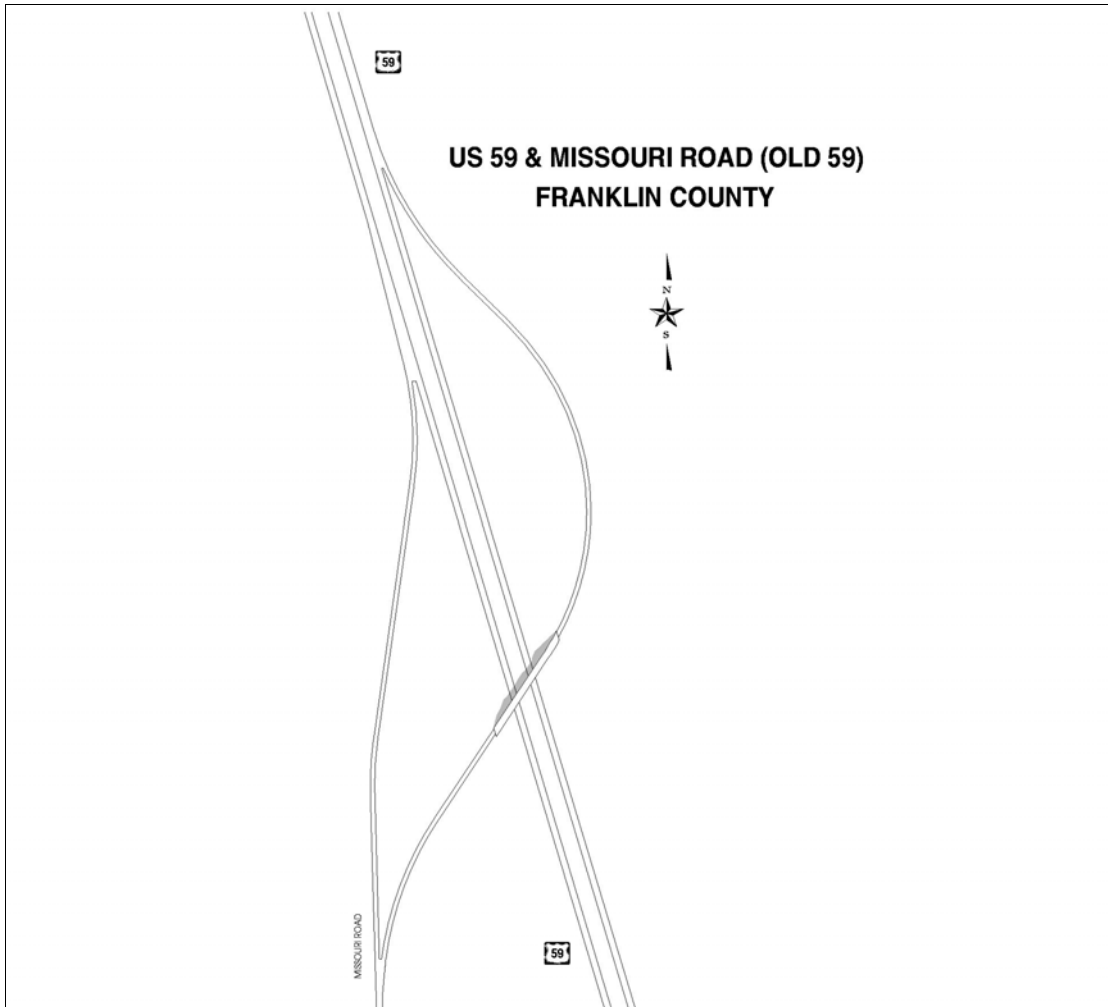
DESCRIPTION

REMOVE K-28 DUPLICATE ROUTING ALONG K-9 FROM US-81 JCT. IN CONCORDIA, WEST TO THE K-28 JUNCTION.

The Kansas D.O.T. makes no warranties, guarantees, or representations for accuracy of this information and assumes no liability for errors or omissions.

KANSAS DEPARTMENT OF TRANSPORTATION

ROUTE	COUNTY	PROJECT	WORK TYPE	EST COMPL	ACCESS CONTROL**
US 59	FRANKLIN	K 7889-02	INTERCHANGE	3/30/2010	F



**Access Control Codes: "F" = Full Control, "P" =Partial Control, "N/A" = Not Applicable

Contract I.D. 508122174

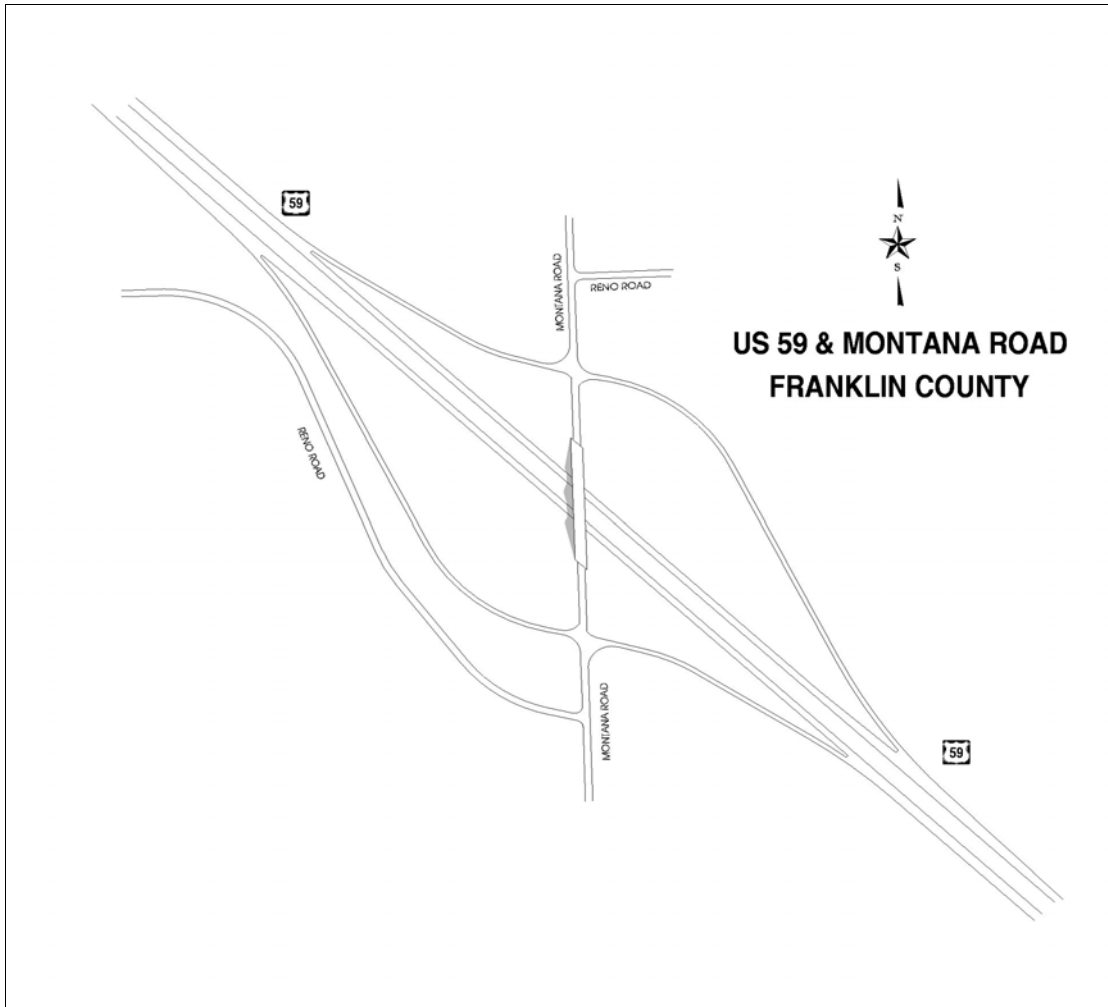
DESCRIPTION

NEW INTERCHANGE AT US-59 AND MISSOURI ROAD (OLD US-59).

The Kansas D.O.T. makes no warranties, guarantees, or representations for accuracy of this information and assumes no liability for errors or omissions.

KANSAS DEPARTMENT OF TRANSPORTATION

ROUTE	COUNTY	PROJECT	WORK TYPE	EST COMPL	ACCESS CONTROL**
US 59	FRANKLIN	K 7889-02	INTERCHANGE	3/30/2010	F



**Access Control Codes: "F" = Full Control, "P" =Partial Control, "N/A" = Not Applicable

Contract I.D. 508122174

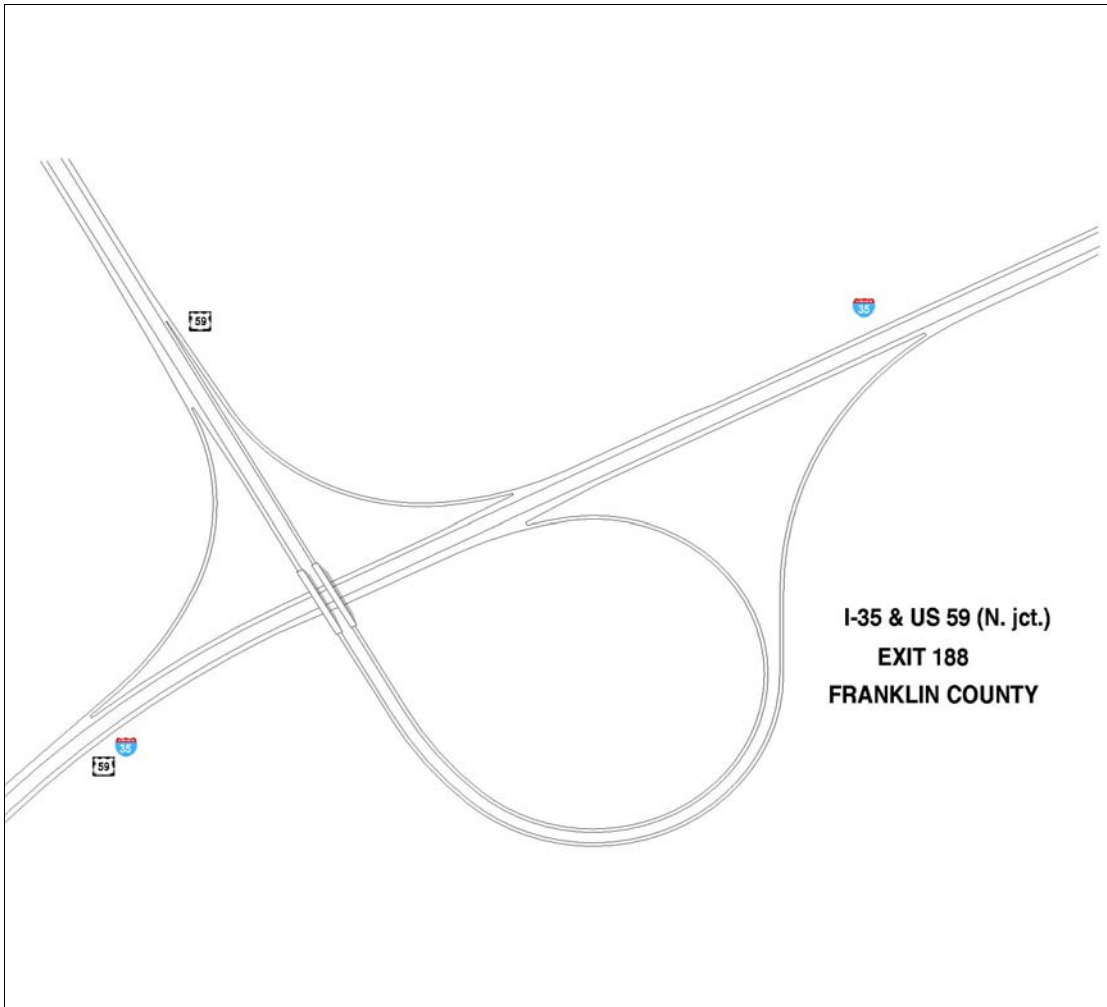
DESCRIPTION

NEW INTERCHANGE AT US-59 AND MONTANA ROAD.

The Kansas D.O.T. makes no warranties, guarantees, or representations for accuracy of this information and assumes no liability for errors or omissions.

KANSAS DEPARTMENT OF TRANSPORTATION

ROUTE	COUNTY	PROJECT	WORK TYPE	EST COMPL	ACCESS CONTROL**
US 59	FRANKLIN	K 7889-02	INTERCHANGE	3/30/2010	F



**Access Control Codes: "F" = Full Control, "P" =Partial Control, "N/A" = Not Applicable

Contract I.D. 508122174

DESCRIPTION

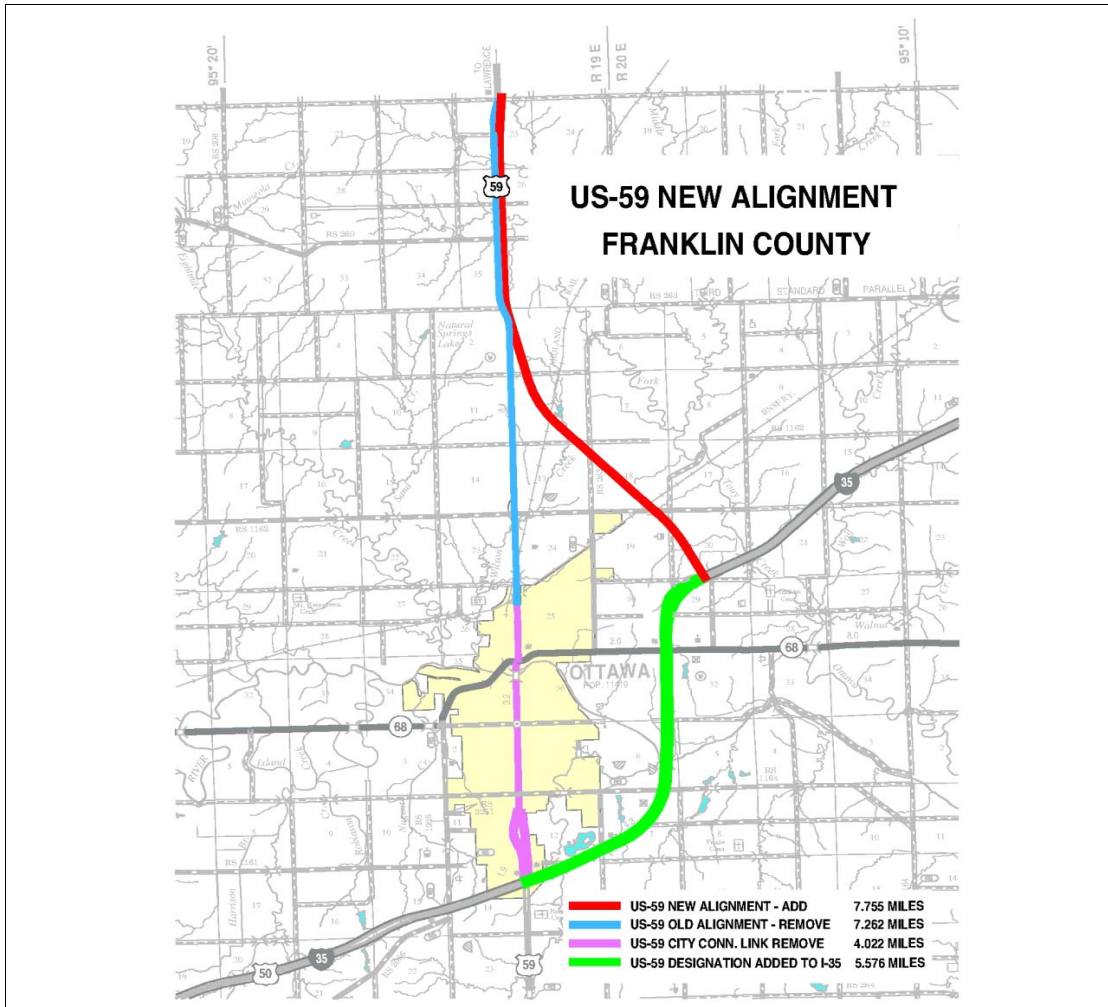
NEW INTERCHANGE AT I-35 AND US-59 NORTH JUNCTION. - EXIT 188

The Kansas D.O.T. makes no warranties, guarantees, or representations for accuracy of this information and assumes no liability for errors or omissions.

KANSAS DEPARTMENT OF TRANSPORTATION

ACCESS CONTROL**

ROUTE	COUNTY	PROJECT	WORK TYPE	EST COMPL	ACCESS CONTROL**
US 59	FRANKLIN	K 7889-02	GR,BR.& SURF	3/30/2010	F



**Access Control Codes: "F" = Full Control, "P" =Partial Control, "N/A" = Not Applicable

Contract I.D. 508122174

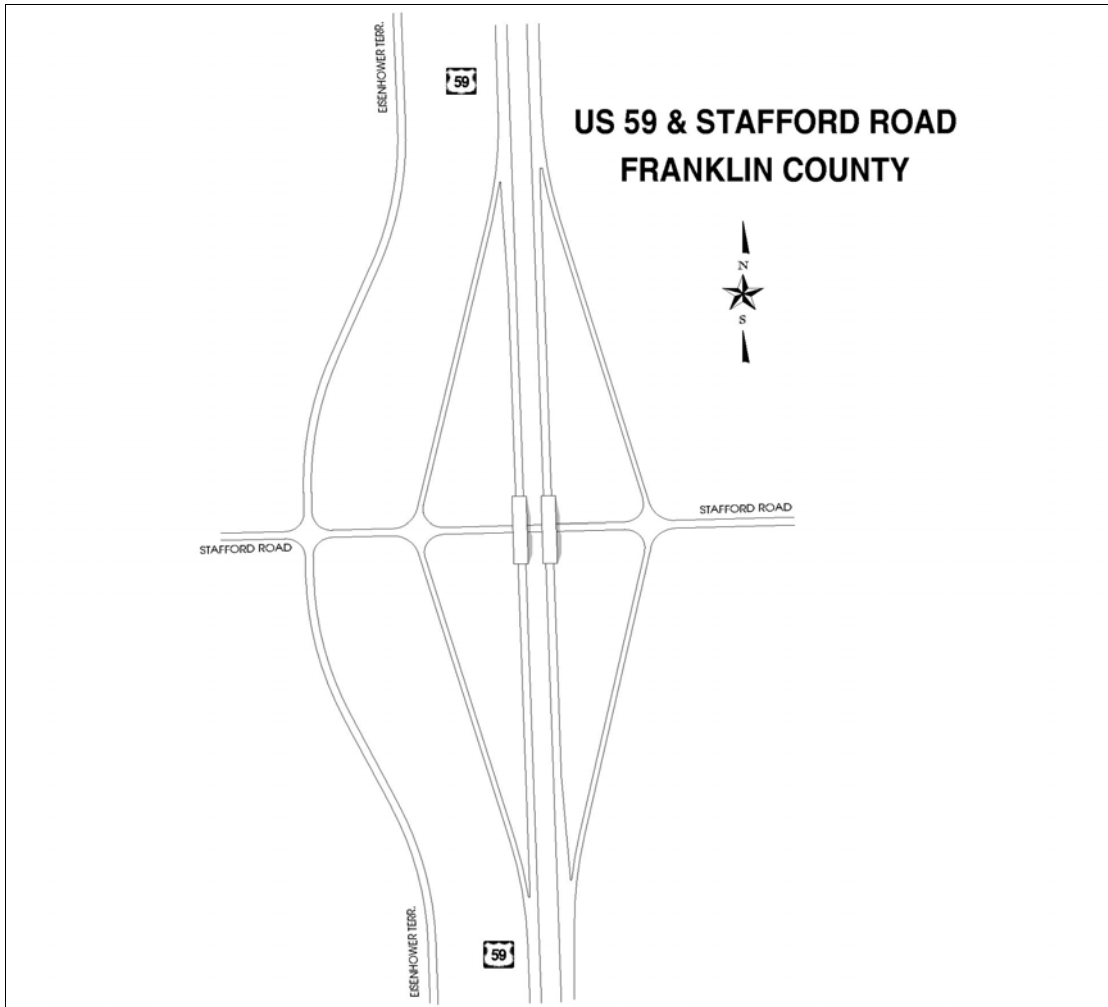
DESCRIPTION

New alignment of US-59 around east side of Ottawa. This will include a new routing over a portion of existing I-35, and a new alignment from I-35 northwesterly to near the existing alignment of US-59, then paralleling existing alignment north to the Franklin/Douglas county line.

The Kansas D.O.T. makes no warranties, guarantees, or representations for accuracy of this information and assumes no liability for errors or omissions.

KANSAS DEPARTMENT OF TRANSPORTATION

ROUTE	COUNTY	PROJECT	WORK TYPE	EST COMPL	ACCESS CONTROL**
US 59	FRANKLIN	K 7889-02	INTERCHANGE	3/30/2010	F



**Access Control Codes: "F" = Full Control, "P" =Partial Control, "N/A" = Not Applicable

Contract I.D. 508122174

DESCRIPTION

NEW INTERCHANGE AT US-59 AND STAFFORD ROAD.

The Kansas D.O.T. makes no warranties, guarantees, or representations for accuracy of this information and assumes no liability for errors or omissions.